



TORCH BEARER



1924

1928

1932

1936

1940

1944

1948

1952

1956

1960

1964

1968

1972

1976

1980

1984

1988

1992

1994

1998

2002

2006

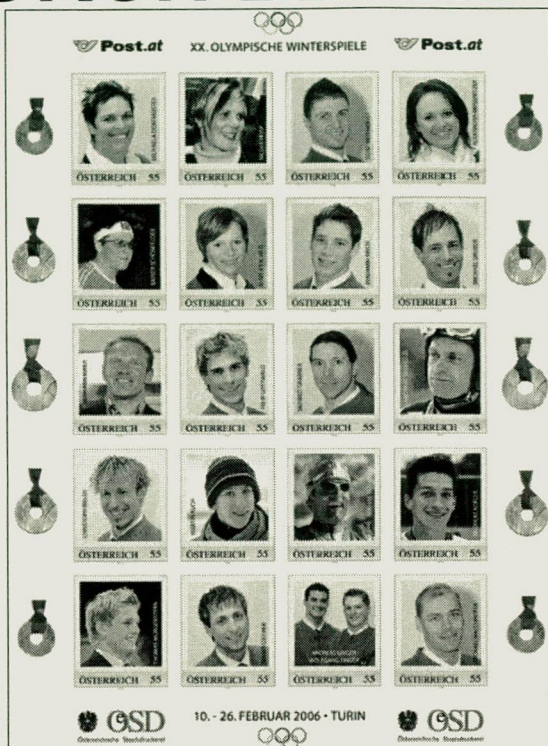
2010

2014



2 3. FEB. 2006

Olympische Winterspiele
2006 Sestriere
1150 Wien



1986

1990

1994

1998

1992

1964

1920

1924

1928

1932

1936

1940

1944

1948

1952

1956

1960

1964

1968

1972

1976

1980

1984

1988

1992

1996

2000

2004

2008

2012



SOCIETY of OLYMPIC
COLLECTORS

SOCIETY of OLYMPIC COLLECTORS

The representative of F.I.P.O. in Great Britain



YOUR COMMITTEE

CHAIRMAN AND EDITOR :	Bob Farley, 3 Wain Green, Long Meadow, Worcester, WR4 0HP, Great Britain. rfarleysoc@aol.com
VICE CHAIRMAN :	Bob Wilcock, 24 Hamilton Crescent, Brentwood, Essex, CM14 5 ES, Great Britain. bob@towlard.freemove.co.uk
SECRETARY :	Miss Paula Burger, 19 Hanbury Path, Sheerwater, Woking, Surrey, GU21 5RB Great Britain.
TREASURER AND ADVERTISING :	David Buxton, 88 Bucknell Road, Bicester, Oxon, OX26 2DR, Great Britain. david.buxton@bnc.ox.ac.uk
AUCTION MANAGER :	John Crowther, 3 Hill Drive, Handforth, Wilmslow, Cheshire, SK9 3AP, Great Britain. olcrow3@btinternet.com
DISTRIBUTION MANAGER, BACK ISSUES and LIBRARIAN :	Ken Cook, 31 Thorn Lane, Rainham, Essex, RM13 9SJ, Great Britain. kenny@rainham3.freemove.co.uk
P. R. O. and PACKET and PACKET MANAGER	Brian Hammond, 6 Lanark Road, Ipswich, IP4 3EH brian.hammond57@ntlworld.com
WEB MANAGER	Mike Pagnamenos

* Please note new email address for John Crowther *

BACK ISSUES: At present, **most** issues of TORCH BEARER are still available to Volume 1, Issue 1, (March 1984), although some are now exhausted.

As stocks of each issue run out, they will not be reprinted. It is Society policy to ensure that new members will be able to purchase back issues for a four year period, but we do not guarantee stocks for longer than this. Back issues cost £2.00 each, or £8.00 for a year's issues, including postage by surface mail. If ordering single copies, please indicate which volume you require. Cheques should be made payable to the SOCIETY of OLYMPIC COLLECTORS and sent with your order to David Buxton at the above address. If you wish to receive back issues by airmail, please add 75 pence per issue (£3.00 per volume).

LIBRARY: Photocopies of articles are available through the Librarian at 10 pence per sheet. Please enclose payment with the order. Books may be borrowed, but postage must be paid IN BOTH DIRECTIONS. The Librarian's address is listed above.

COPY DATES: TORCH BEARER is published four times a year; in February, May, August and November. Articles or adverts for inclusion in a particular issue should be sent at least two months in advance.

VOLUME 23

MARCH 2006

ISSUE 1

CONTENTS

Front Page	2
Tokyo, Japan - 1964 Torch Relay	3
Chinese Olympic Committee	5
Tokyo 1964 - German Gymnastic Sports League	6
XII Olympiad Tokyo 1940	7
International Circulating Packet	10
1932 Los Angeles	11
1920 Antwerp - the ANTWERPEN 1 machine cancel	27
Beijing 2008 - Some postal 'basics' and translation	28
Austria Post at the XXth Olympic Winter Games	38
1956 Melbourne Olympic Challenge: Gold, Silver, Bronze!	42
SOC Summary of Accounts	46
London 2012 FDCs 5 August 2005.	47

MEMBERSHIP OF THE SOCIETY OF OLYMPIC COLLECTORS

Membership starts on election, of which applicants will be notified, and will last for one calendar year. All back issues of the magazine for the current year will be sent to members joining during the year.

Junior members are those aged under 18 years in the year of joining, subscription rates are half of the adult rate until the 18th birthday.

All applications should be made to the Secretary.

Subscription rates for 2006 are:

U.K. £12.00; Europe, £14.00 (€ 20, \$US 30).

Outside Europe, £19.00 (€ 30, \$US 35, \$AU 45)

Acceptable forms of payment: Sterling, \$US, \$Australian or € currency notes; Sterling cheques; **PayPal - in £ sterling**.

FRONT PAGE

Welcome back, and a belated 'Happy New Year'. 2006 - An Olympic Year, and the Games are already over, with less than 900 days to Beijing.

Apologies for the delay in issuing the first Torch Bearer of the year, Torino and personal commitments before the Games did not allow the opportunity to publish earlier - May should be back on track.

Torino (Turin), was an enjoyable Games, although for collectors it was very restrained from a philatelic point of view. It was surprising that the Italian Post Office issued 9 stamps and a miniature sheet just before the Games on the 8.02.2006 but throughout the Games only 7 commemorative postmarks were introduced.

The failure to arrange a venue and stage a Philatelic event was a blow, and it is difficult to believe that this could not be arranged in a country where there are so many passionate collectors.

May issue will carry details of Torino 2006 and the exploits of some members during the Games, assuming that all of the mail has arrived.

Beijing 2008 is now shaping up to be the ultimate challenge - the number of postmarks being utilised (or knowledge of them!) grows daily, and in this issue there is an attempt to make you all aware of the scale of the problems encountered in trying to keep track, apologies if this appears to be a combination of geography and language lessons, but there is a need to understand the 'broader picture' to have any chance of comprehending the philatelic story of the Beijing Olympic Games.

This issue contains the first installment from John Miller of a series of articles to aid identification of Tokyo 1964 postmarks by identifying the Japanese script for each city / town / post office. Ultimately this will provide details for all the cancellations.

In this issue, John Crowther has made available a 16 page exhibit for Los Angeles 1932, which I hope you will all enjoy. This does demonstrate that scans of written up pages can easily be converted to a Torch Bearer article, with little additional effort by the person making the submission - I would be grateful for any similar submissions of 4 - 16 pages to use in future issues.

For regular users of the internet, please check societyofolympiccollectors.com as we are expanding use of the site to post news items, and have other changes to the site underway.

Diary note:

2006 May 6 - SOC Display at Thatcham and District Philatelic Society Stamp Fair

(Newbury, Berkshire). At the Ground Floor Atrium of the Bayer Building, Strawberry Hill in Newbury between 10:00am and 4pm
(see www.tdps.org.uk for further details).

Tokyo, Japan - 1964 Torch Relay

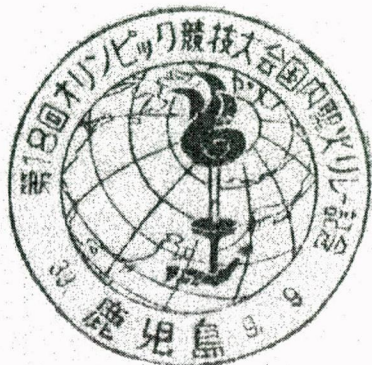
Domestic Routes, part 1.

John Miller

The Domestic Torch Relay for the 1964 Summer Olympic Games in Japan was split into four routes. Each was numbered and allocated a colour. A special handstamp was designed and cancellers were issued to forty-eight cities to include all the prefectures in the country.

These handstamps were used from the 9th. of September to the 10th. October 1964; a total of thirty days.

An example of the special handstamp used in Kagoshima on the 9th. Of September.



A postcard using the same design as the stamp (Michel 869) was used to record the passage of the torch. The stamp was affixed on the front of the card and cancelled with the special handstamp dated on the day the torch entered each designated city.

There are two printings of the card but it is not known if they were produced at the same time or independently. The easiest way to distinguish them is by the 'affix stamp box' printed in the top right-hand corner on the back of the card. Those with an 'asb' are a lighter blue around the flame from the cauldron, the base of the flame is more orange and the screen dots are more open. The other printing has no 'asb', is darker blue around the flame, redder at the base of the flame and has closer screen dots. Both types of card were cancelled by all cities on the four torch routes.

The Route

The flame was flown from Naha on Okinawa in the Ryuku Islands to Kagoshima on the Japanese mainland by a YS11 of All Nippon Airways. On arrival a torch was ignited from the flame and this began its journey on Route 1, (Yellow Route) on the 9th. of September. Leaving Kagoshima, it was borne on a run up the western side of Kyushu to the prefectural city of Kumamoto, 12th. September. It then went west to Nagasaki, 14th. September and Sag, 15th. September, followed by Fukuoka, 16th. September. It then travelled across the sea to Yamaguchi, 18th. September, on the southern tip of Honshu. The torch was then carried along the southern coast to Hiroshima, 20th. September, and over to the northern coast and Matsue, 22nd. September. It then travelled eastward along the coast to Tottori and Fukui, 25th. and 29th. September; Kanazawa, 30th. September.

The relay then went inland to Toyama, on 1st. October, reaching Nagano on the 3rd. October, Kohfu on the 6th. Of October and finally the Tokyo Metropolitan Office on the 9th. October where it was united with the other torches.

On the 10th. October, the united torch was carried to the National Stadium to herald the opening of the 1964 Summer Olympic Games.

Recognition of the city names in Japanese script is obviously essential in identifying the individual cancels. For the Torch Relay, date is also a valid indicator although the same date often exists for one of the other domestic routes.

The following diagram identifies the cities for Domestic Route 1.

The Torch Relay Domestic Route 1 - (Yellow)		MTASUE	松江
KAGOSHIMA	鹿 児 島	TOTTORI	鳥 取
KUMAMOTO	熊 本	FUKUI	福 井
NAGASAKI	長 崎	KANAZAWA	金 沢
SAGA	佐 賀	TOYAMA	富 山
FUKUOKA	福 岡	NAGANO	長 野
YAMAGUCHI	山 口	KOHFU	甲 府
HIROSHIMA	広 島	TOKYO	東 京

Remember the Society auction when disposing of your duplicate material. - The Auction Manager would be pleased to receive your lots.

Take the opportunity to reach fellow Olympic collectors

CHINESE OLYMPIC COMMITTEE



The Chinese Olympic Committee (COC) is a non-governmental, non-profit national sports organization of a mass character, with the objective of developing sports and promoting the Olympic Movement in the country. It represents China in handling international affairs related to the Olympic Movement.

It is the sole representative of the whole country's Olympic Movement in its relations with the International Olympic Committee (IOC), the Olympic Council of Asia (OCA) and other international sports organizations, as well as all National Olympic Committees (NOCs).

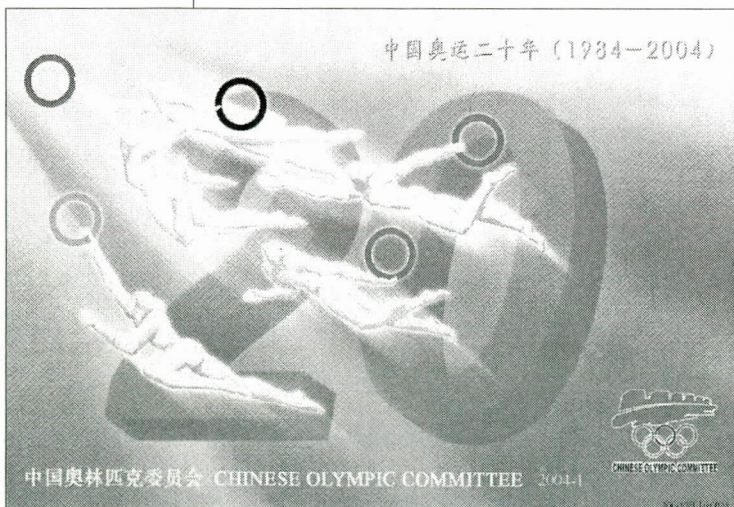
The first Chinese sports organization was founded as early as October 1910, and recognized by the IOC in 1922. In May 1954, not long after the founding of the People's Republic of China, the IOC recognized the All-China Sports Federation (Chinese Olympic Committee) at the 49th IOC Session held in Athens. In 1956, however, the IOC allowed the Taiwan authorities to send a team to the 16th Olympic Games. The All-China Sports Federation protested against the "two Chinas" plot fabricated by the IOC leader. In August 1958, the COC severed all its relations with the IOC. It was not until November 26, 1979 that, with a resolution adopted by all IOC members, the COC's legal status was reinstated in the IOC, while the Olympic Committee in Taipei was allowed to remain in the IOC under the name of "the Chinese Taipei Olympic Committee."

Postal
stationery
card.
2004-1



中国邮政明信片

Postcard
The People's Republic of China



commemorating
20th. year of
participation in
the Olympic
Games by China
following
reinstatement of
the status of the
Chinese Olympic
Committee.



AGHNA 2004



TOKYO 1964 - German Gymnastic Sports League

John Miller

The German Gymnastic Sports League (DTSB) produced five labels to promote the 1964 Olympic Games. They were on sale in Germany to help raise funds for the Olympic teams. One label was produced for the Winter Games (Innsbruck), four were produced for the Summer Games (Tokyo).

A card (Spendenkarte) was available for donors to mount the labels as a souvenir of the Games.

Many of these were used to collect autographs of the competitors.

20: Pagoda, 'sun'; 30: Junk, 'sun', 50: Innsbruck emblem,
70: Mt. Fuji, 'sun', 100: Runners.



Spendenkarte,
with serial number
21372.

21372 *

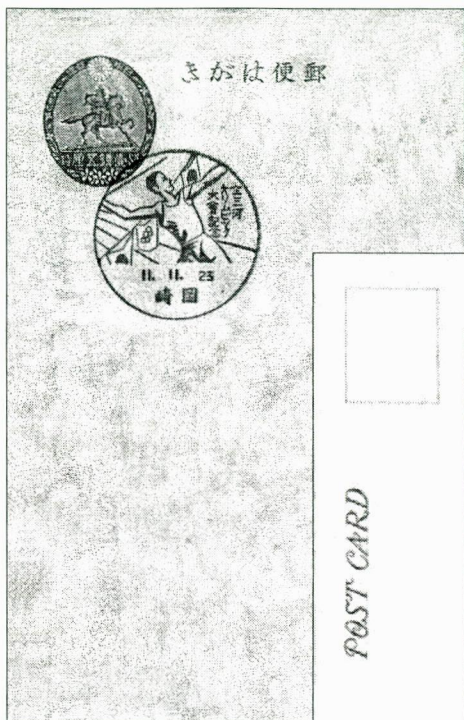

Spendenkarte
für die
Olympischen Spiele 1964
Innsbruck - Tokio

XII OLYMPIAD TOKYO 1940

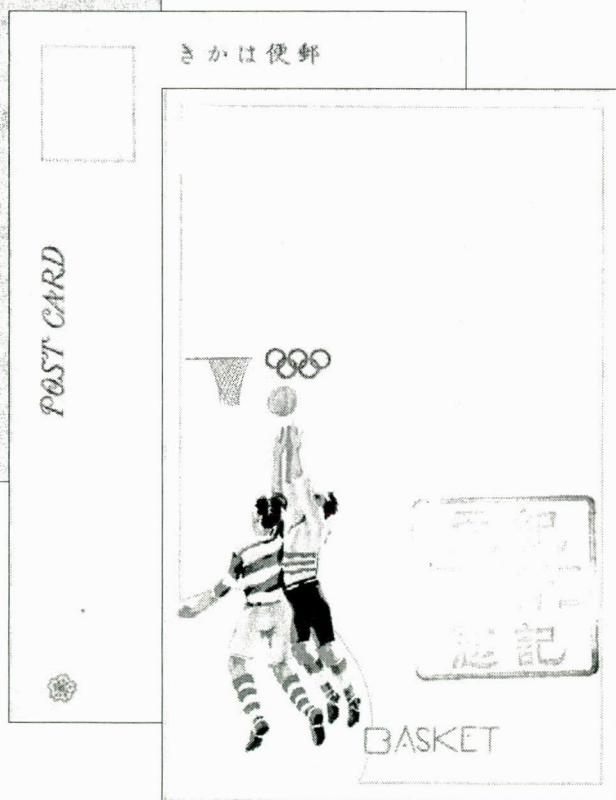
Items provided by M. Ichimura

Illustrations of the array of material relating to the cancelled Games of the XII Olympiad continues to grow, in particular the number of NYK Line postcards.

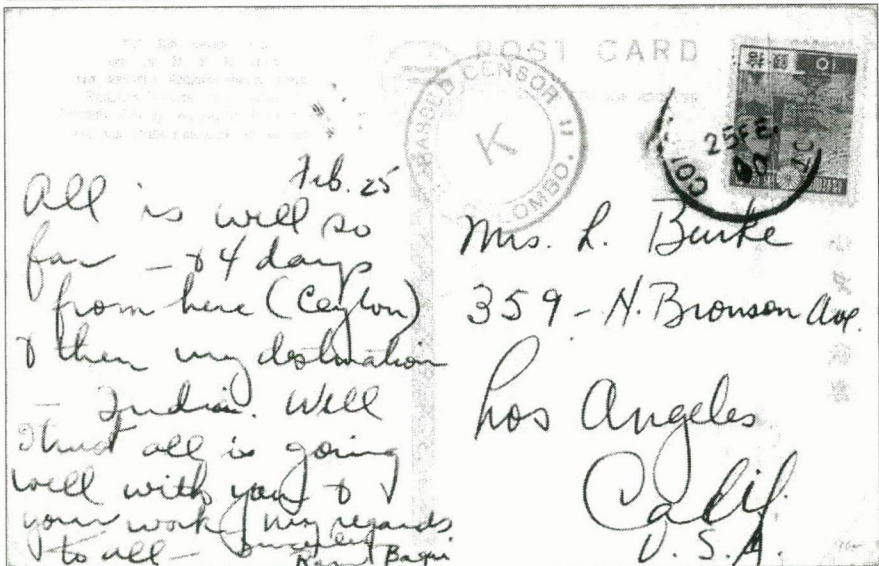
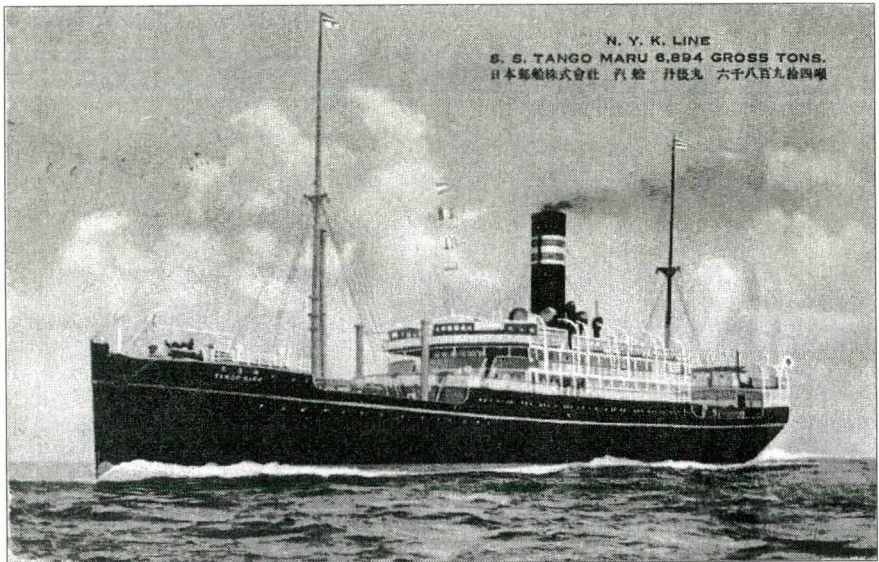
The following illustrations show further items issued to commemorate or promote the 1940 Olympic Games.



left: November 23rd. 1936, Okazaki - Tokyo Olympic Promotional National Games; 'All Mikawa Olympic Games'. Postmark with Japanese and Olympic flags.



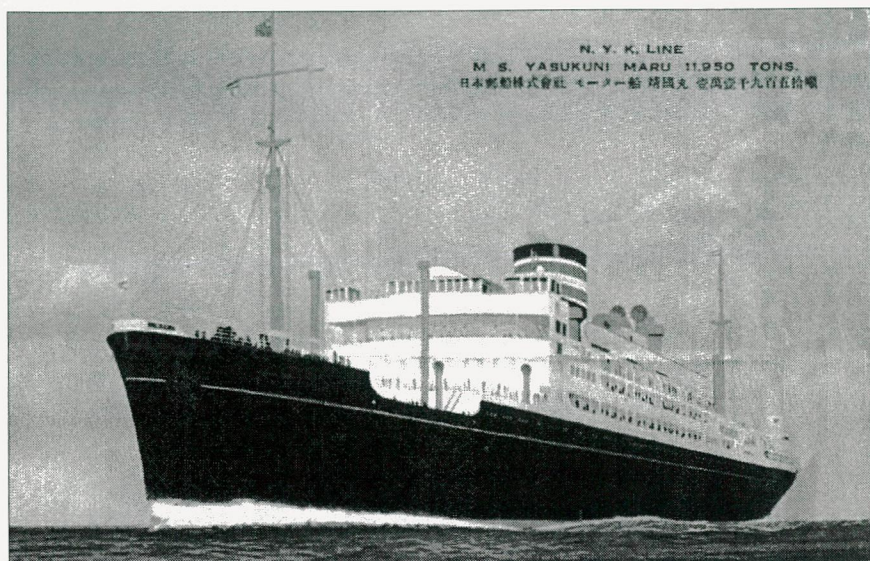
*right: Basketball postcard
Rubber stamp in violet for the
2600th. Anniversary of
founding of the Empire in
Japan.*



N. Y. K. Line, S. S. TANGO MARU 6,894 GROSS TONS.

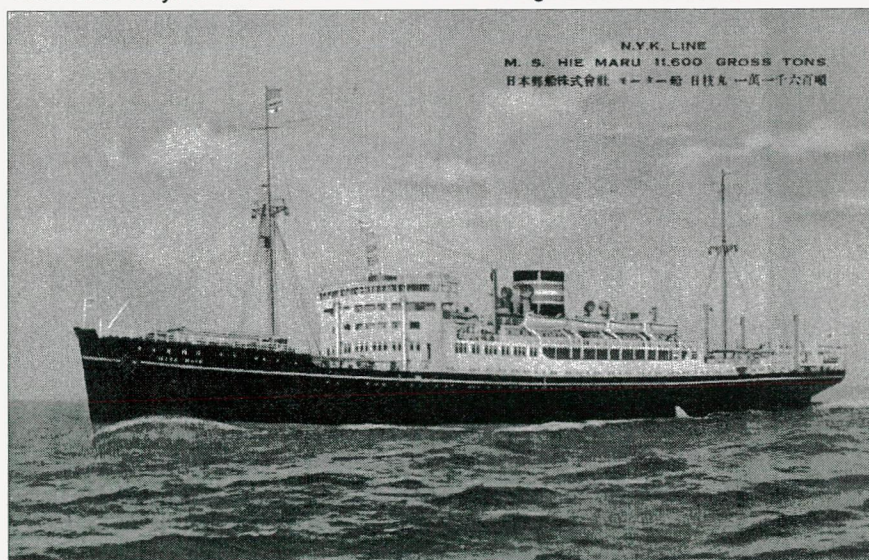
COLOMBO Paquebot, February 25th. 1940, posted to California.
 Colombo (Ceylon) postmark on Japanese definitive stamp 10 Sen.

Obliterated 'Tokyo 1940' text as divider between message and address sections.



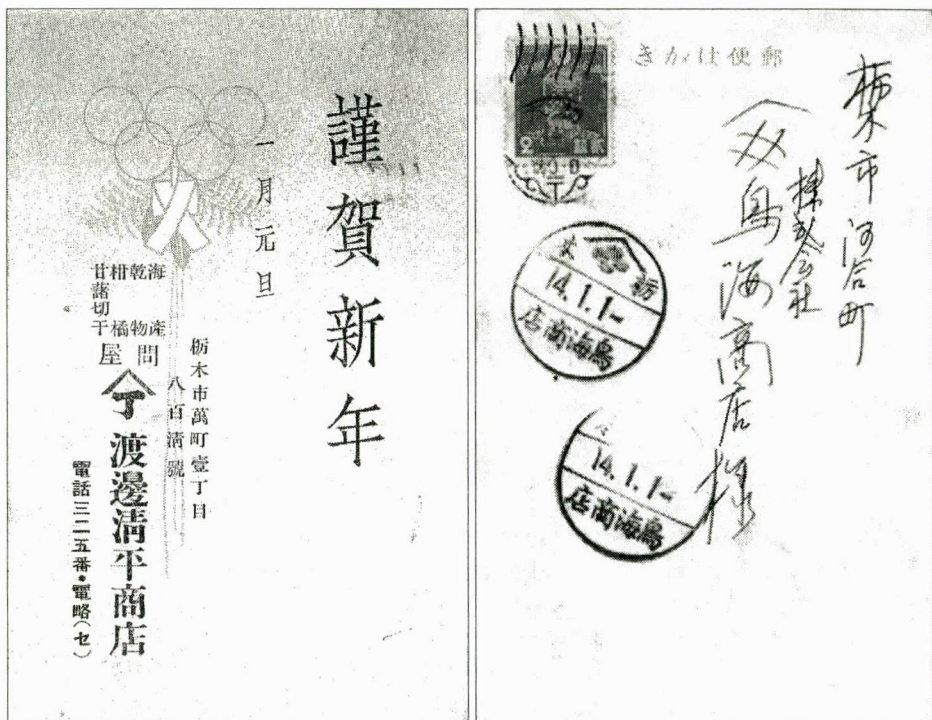
N. Y. K. Line, **M. S. YASUKUNI MARU** 11,950 TONS.

Obliterated 'Tokyo 1940' text as divider between message and address sections.



N. Y. K. Line, **M. S. HIE MARU** 11,600 GROSS TONS.

'XII OLYMPIAD TOKYO 1940' text as divider between message and address sections.



Promotional card - New Year Greeting Card (Watanabe Kyohe; Shoten).

Used at Tochigi in Japan.

Design includes the Olympic Rings.

INTERNATIONAL PACKET - Is your Olympic collection missing out?

Have you any gaps in your Olympic collection? Eighteen members of SOC are now filling gaps in their collection from lots in our international packet. So far over 350 lots have been offered to members. Each lot is illustrated usually in colour so members can see what they are buying. No commission is charged to buyers. The packet contains only Olympic material [Stamps, covers, labels, postcards] from summer and winter games and the IOC. Each packet includes items from the early games up to the 2012 games in London. To receive the packet members in the UK or any other part of the world should send their names to the packet secretary and their details will be added to the list to receive packet 4 now being circulated. Member's names are rotated to give each a fair chance.

The packet secretary would welcome more Olympic material for the packet. Please send the material to me with two photocopied pages for each lot. All material is held until paid for and covered by the society insurance so it is risk free to sellers. 10% commission is charged. Any profit going to society funds. For a sample page to copy contact me.

Brian Hammond. 6 Lanark Road. Ipswich. IP4 3EH. UK.

THE 1932 LOS ANGELES OLYMPIC GAMES

The International Olympic Committee at a meeting held in Rome in 1923 accepted a proposal from U.S.A. to celebrate the Games of the X Olympiad in Los Angeles in 1932.

The U.S. Post Office produced a set of two stamps and several first day covers. However a diligent search will discover other postal related material to complement a collection. Of particular interest were the pre-cancels which hold a unique place in Olympic philately and the Naval covers of the U.S. Pacific Fleet.



PLAN

Pages	1	Introduction and Plan
	2	Los Angeles County Brochure
	3 & 4	Advertising
	5 & 6	Vignettes
	7	Xth Olympiade Committee covers
	8	Stamps and First Day Cover
	9	Cachets
	10	Stamp Dealer's Leaflet
	11	Pre-cancels
	12/14	Olympic Village
	15	Naval covers
	16	Cablegram

Text in italics relates to the Social material content of the exhibit.

References:

Background to Social Philately by Dr. Edric Druce

Postal History & Vignettes of the 1932 Olympic Games by Sports Philatelists International

LOS ANGELES COUNTY BROCHURE

The Brochure previews the forthcoming Olympic Games and details the highlights for a visitor to the County of Los Angeles.

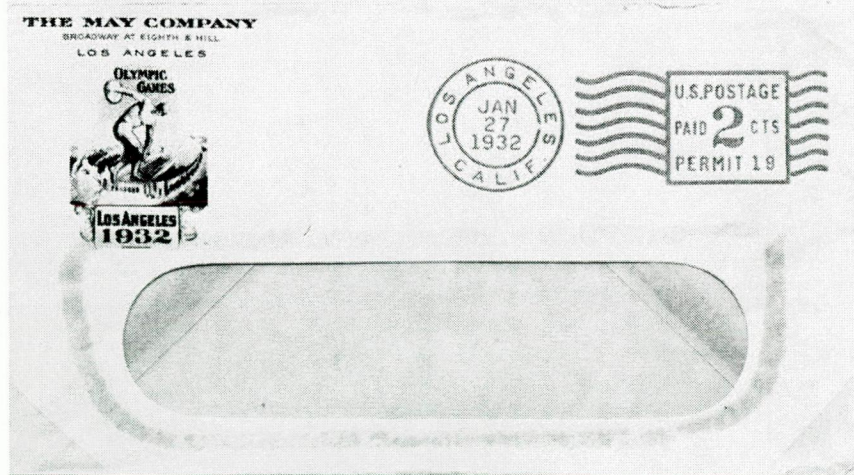
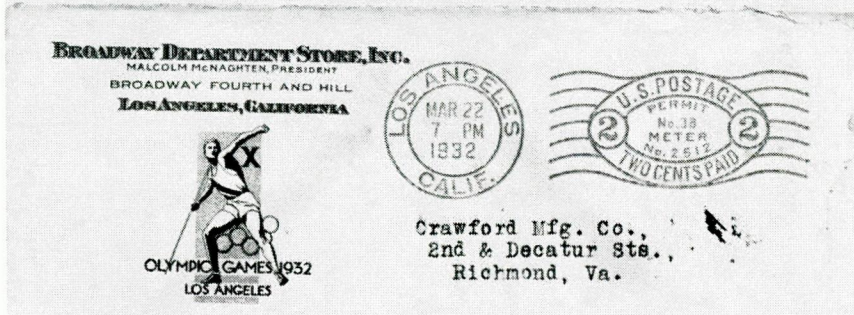
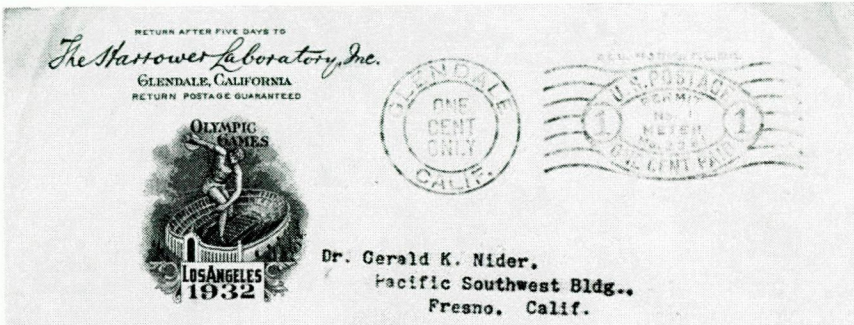


PRE-OLYMPIC ADVERTISING

Many commercial Companies used an Olympic Logo on their stationery.

Two of Broadway's biggest Department Stores were using Olympic Logos as early as March & January 1932.

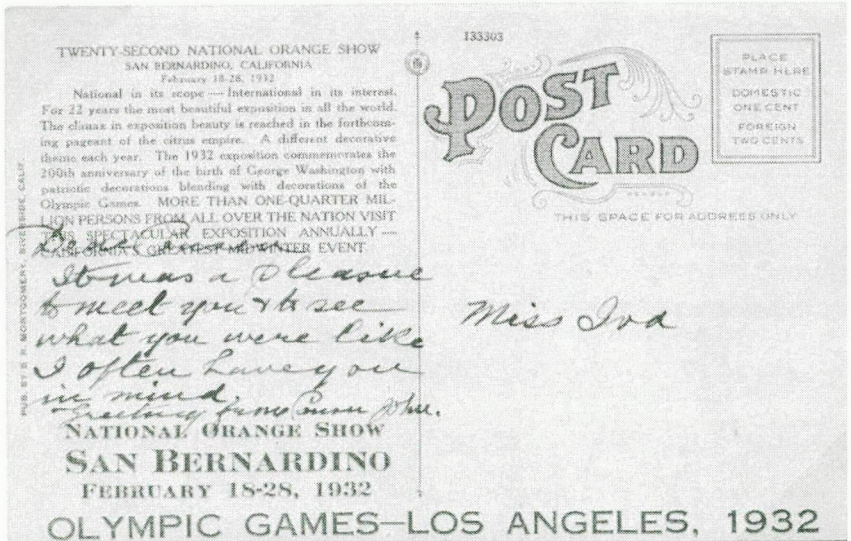
Covers should be postmarked before 30th July to be considered pre-Olympic.



OLYMPIC ADVERTISING



Private Mailing Card for Helms Bakeries,
Official Olympic Games Bakers.

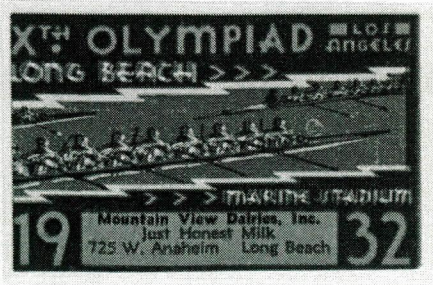
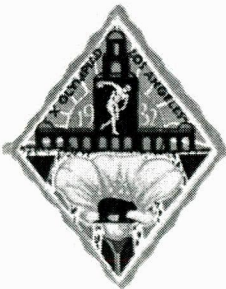
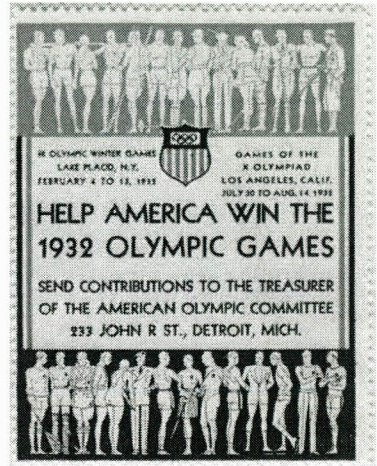


Post card from the National Orange Show
San Bernardino February 18-28, 1932
Overprinted 'Olympic Games - Los Angeles, 1932'

VIGNETTES

A rich variety of Vignettes and seals exist advertising the Los Angeles Summer Games. These can be found in many shapes, sizes and designs.

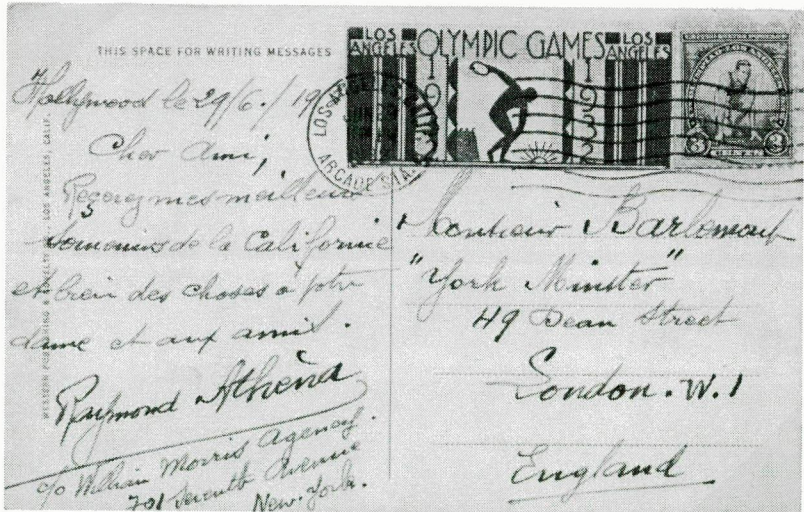
They often include a space for overprinting with the name of a commercial enterprise. This was the first occasion that vignettes had been prepared in such large numbers and form a very attractive addition to an Olympic collection.



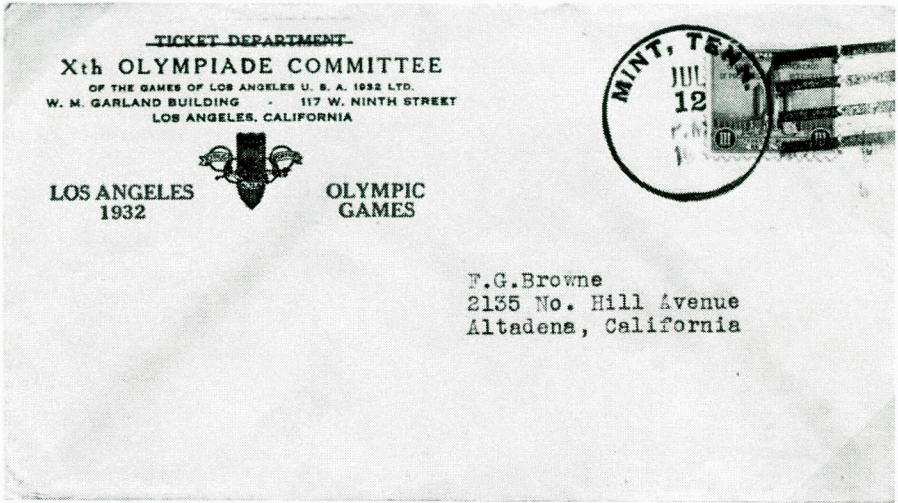
VIGNETTES USED ON COVER.

Two examples of vignettes used on cover.

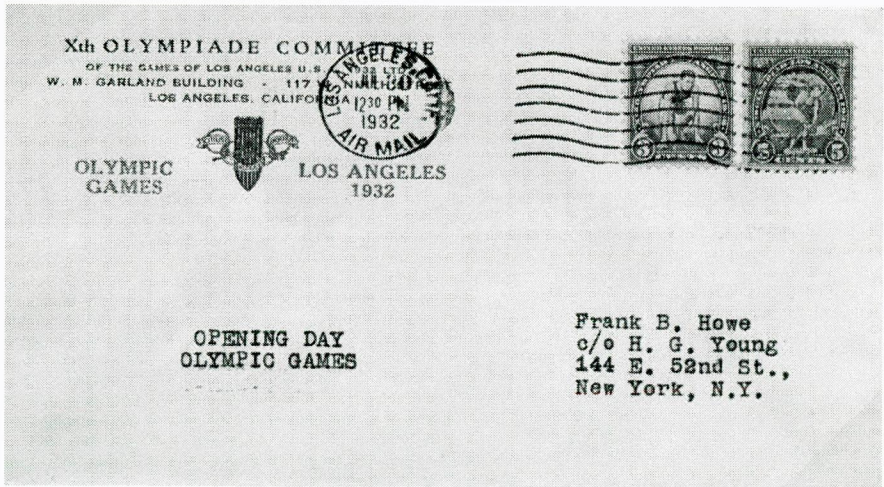
The vignette on the top cover is used correctly i.e. on the back.
The vignette on the postcard has been incorrectly franked.



Xth OLYMPIADE COMMITTEE COVERS.



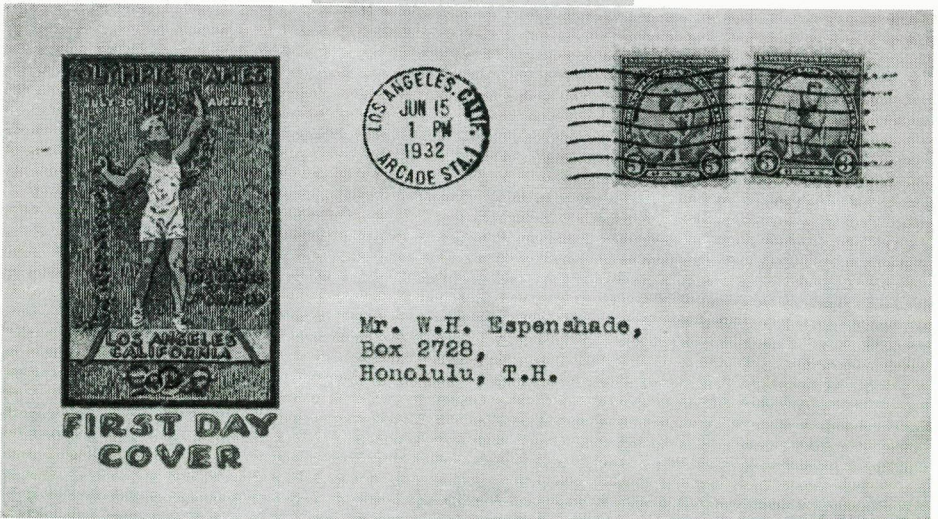
Cover from the Ticket Department July 12, 1932



Cover from Organising Committee posted on Opening Day of Games.

STAMPS & COVERS.

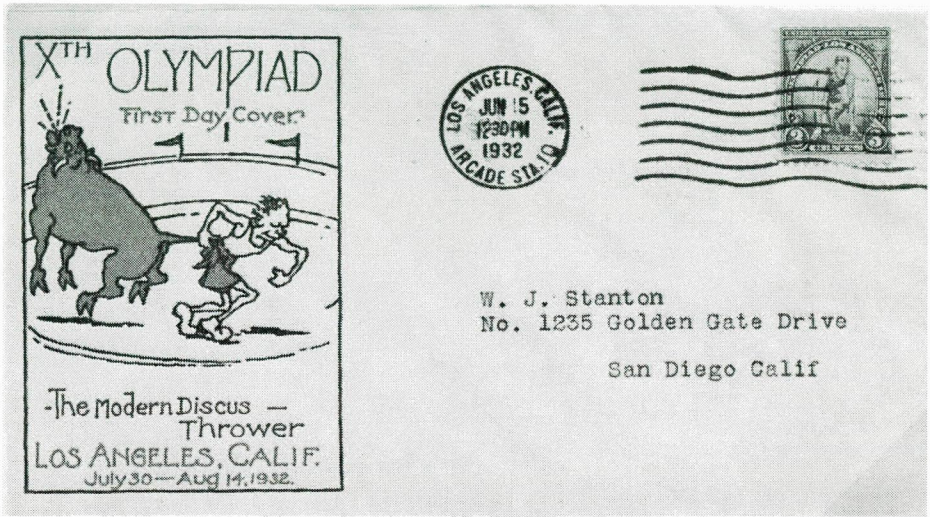
A set of two stamps was issued on 15th June 1932. Rotary recess printed under Government contract by the Bureau of Engraving & Printing on unwatermarked soft-wove, grey-white paper. Perf. 11 x 10.5



The great majority of First Day Covers show the machine cancellation of Los Angeles, Arcade Station, located in the heart of downtown Los Angeles. The no. after 'Arcade Stn.' in the dial is a machine no. & not a further location or site.

CACHETS.

There were numerous different cachets used on first day covers, many of which are difficult to find and form an acceptable addition to any collection of the 1932 Los Angeles Olympic Games.



10th Olympic Games In Los Angeles

First Day Cover Service 2c & 5c Commemorative Stamps

2 CENTS

2c SINGLE ON COVER.....8c

2c BLOCK OF FOUR ON COVER.....12c

5 CENTS

5c SINGLE ON COVER.....10c

5c BLOCK OF FOUR ON COVER.....30c

2 & 5 CENTS

2c & 5c ON COVER.....15c

COMPLETE SET OF FIVE COVERS.....75c

You Supply Your Own Covers at the Above Prices

To All My Philatelic Friends,

Greetings:

The above is the price I have set on the First Day Cover Service on the new Olympic 2c and 5c Commemorative Stamps, which will be on sale in Los Angeles the FIRST DAY.

I have kept the price within the reach of all and my personal service will be given to all orders. Only well centered stamps will be used.

With Each Complete Set of 5 Covers Ordered I Will Give 1 Sheet of 25 OFFICIAL Xth OLYMPIC GAMES POSTER SEALS as per sample.

SAMPLE



STAMP

THIS OFFER IS ONLY OPEN For A FEW DAYS, SO PLEASE LET ME HEAR FROM YOU
POSTAL MONEY ORDERS OR CASHIER'S CHECKS ONLY ACCEPTED. NO STAMPS

Yours, For the Best Service,

A. A. M. S. EARL MILLS I. P. M. S.
750 N. HAYWORTH AVE., LOS ANGELES, CALIF.

I am having several thousand Envelopes 6 3-4 Size Printed just like Stamp Price on application

PRE-CANCELS

A unique contribution to Olympic Philately is provided by the Los Angeles Games in the pre-cancelled stamps. Most United States stamps of the day were sold pre-cancelled for bulk mailing.

The Olympic stamps are recorded pre-cancelled from more than 1300 towns and cities. Complete sets of 3 stamps (including the Winter Games stamp) and inverted cancels are highly sought.



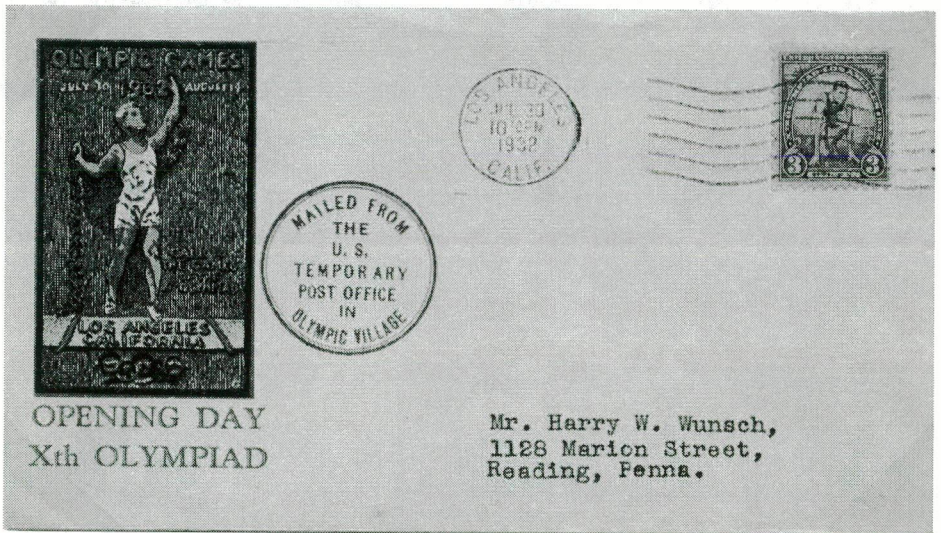
Complete sets

Inverted cancels

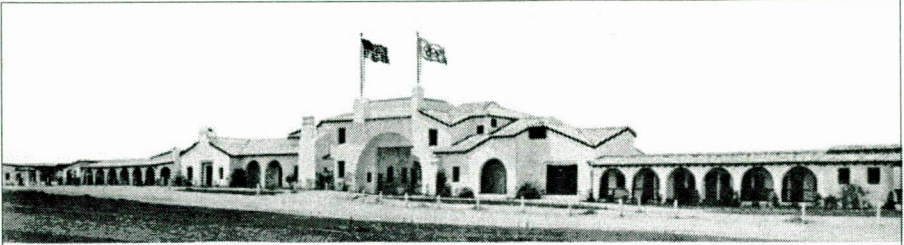
OLYMPIC VILLAGE.



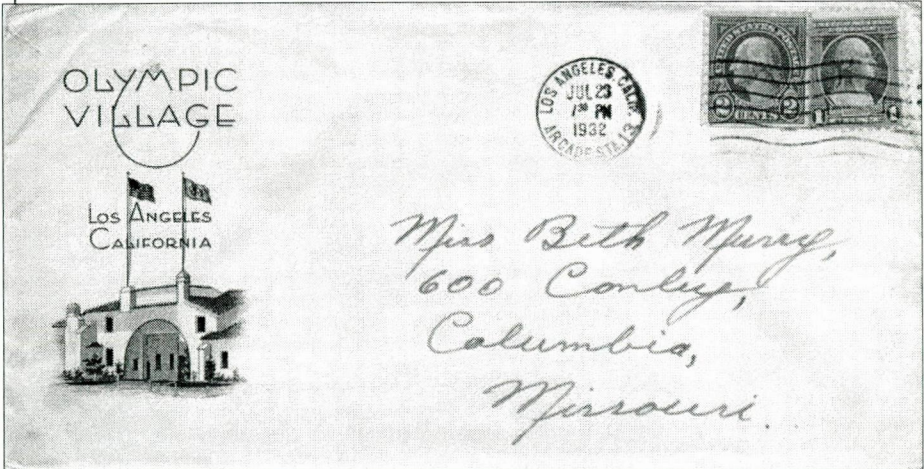
This was the first occasion that athletes were housed in an Olympic Village. Located on a hilltop, cooled by ocean breezes and only ten minutes from the Stadium, the Village consisted of two-room Mexican Ranch-style cottages built in a circle of 250 landscaped acres.



Cachet used on mail posted in the Olympic Village Post Office.



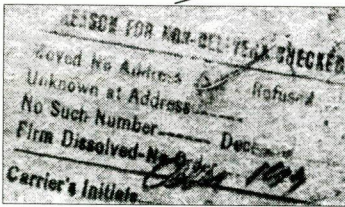
OLYMPIC
VILLAGE
LOS ANGELES
CALIFORNIA



Illustrated stationery provided for the use
of athletes in the Olympic Village.

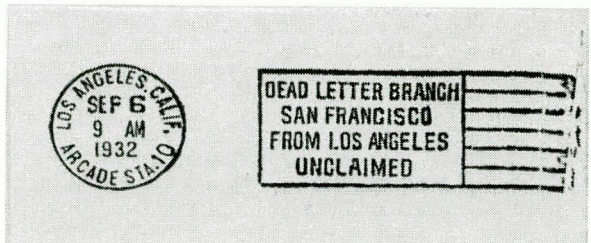


OLYMPIC VILLAGE



Envelope posted Cleveland, Ohio August 10, 1932, addressed to Miss Katherine Rawls, U.S.A Women's Swimming Team, Olympic Village. Purple P.O. cachet 'Moved. No address'. 'Dead Letter Branch cancel on the reverse dated Sep 6, 1932.

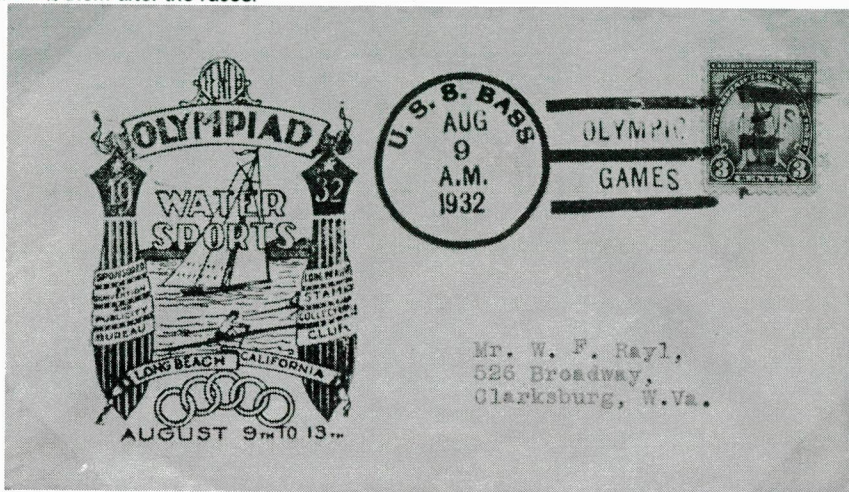
**There were no women athletes in the Olympic Village.
Rawls won the silver medal in Springboard Diving on the day that the Letter was posted (August 10th).**



NAVAL COVERS.

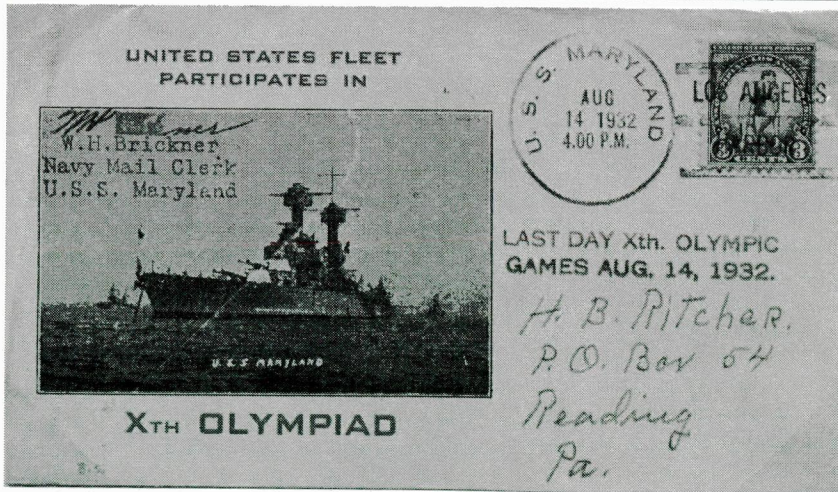
The United States Pacific Fleet stationed in San Pedro Harbour. Maintained and supervised the courses in the waters of San Pedro Bay which were used for the Yachting events during the Games. Many officials, judges and guests used the ships as vantage points for viewing the races.

The U.S. Navy arranged to tow the variuos competitors from their anchorage to the course, returning them after the races.



Enthusiasm for the Olympic Games carried into the mail rooms of the ships as Naval clerks accommodated collectors with an array of dates, slogans & special handstamps, Despite the above such covers are now difficult to find.

Top cover: August 9, 1932 - First Day of the Water Sports, mainly Rowing, at Long Beach



Bottom cover: August 14, 1932 - Last Day of the Games

WESTERN UNION CABLEGRAM

PATRONS ARE REQUESTED TO FAVOR THE COMPANY BY CRITICISM AND SUGGESTION CONCERNING ITS SERVICE 15015

<p style="text-align: center; margin: 0;">CLASS OF SERVICE</p> <p style="font-size: small; margin: 0;">This is a full-rate Telegram or Cablegram unless its deferred character is indicated by a suitable sign above or preceding the address.</p>	<h1 style="margin: 0;">WESTERN UNION</h1> <p style="font-size: x-small; margin: 0;">NEWCOMB CARLTON, PRESIDENT J. C. WILLEVER, FIRST VICE-PRESIDENT</p>	<p style="text-align: center; margin: 0;">SIGNS</p> <p style="font-size: x-small; margin: 0;">DL = Day Letter NM = Night Message NL = Night Letter LCO = Deferred Cable NLT = Cable-Night Letter WLT = Week-End Letter</p>
---	--	---

The filing time as shown in the date line on full-rate telegrams and day letters, and the time of receipt at destination as shown on all messages, is STANDARD TIME.

Received at Main Office, 608-610 South Spring St., Los Angeles, Calif. ALWAYS OPEN 1932 JUL 27 PM 12 57

CDU316 CABLE=TORINOPO 20 27

NLT BASLETTA=
ITALIAN OLYMPIC TEAM LOSA=

IN ALTO I CUORI VI SEGUO ANSIOSAMENTE ABBRACCIO TUTTI
ATTENDENDO CON ESTREMA FIDUCIA=
MAZZINI.

MINUTES IN TRANSIT	
FULL-RATE	DAY LETTER

WESTERN UNION GIFT ORDERS SOLVE THE PERPLEXING QUESTION OF WHAT TO GIVE

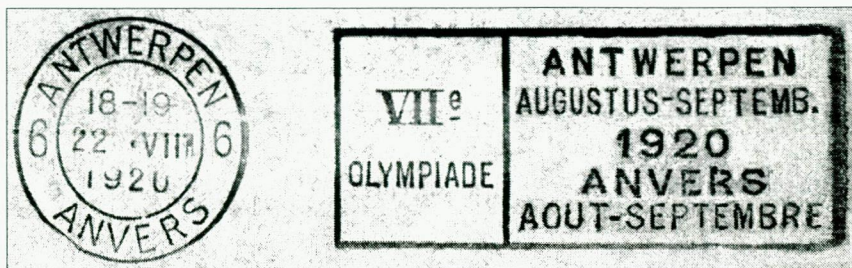
Western Union Cablegram sent by Mazzini, President of CONI, the Italian National Olympic Committee from Turin to the Italian Olympic Team in Los Angeles.

The message reads ' In high spirits, I am following you anxiously, I have great faith in all competitors'.

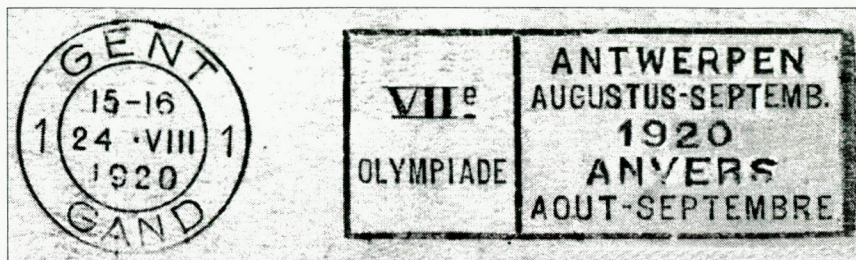
This article was prepared from a philatelic exhibit created by John Crowther.

The exhibit was specifically created for use in the education of philatelic judges, to allow a constructive critique and training in the assessment of entries in the Social Philately class.

ANTWERP 1920 - The Antwerp 1 machine cancel



Above and below, Antwerpen 6 and Gent 1 machine cancels with expected text / spelling.



A member has raised a query relating to the machine cancellations for the VIIIth Olympic Games in Antwerp.

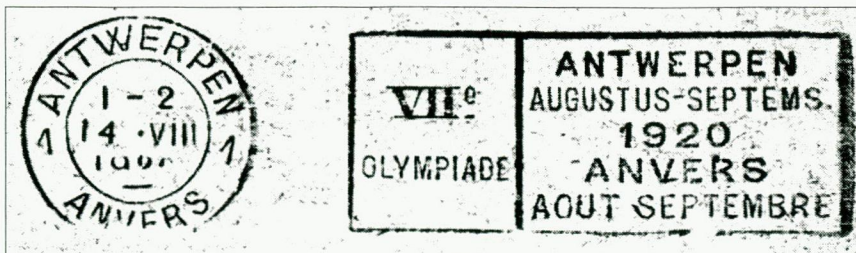
"I have a number of copies of the machine cancellations for the Antwerp Olympic Games, and noticed that a number of publications mention that the 'slogan' used at Antwerpen 1 is known with 'SEPTEMBES' for SEPTEMBRE - an error in the French text.

My copy of the Antwerpen 1 cancel has 'SEPTEMS' for SEPTEMB in the Flemish text. Is this a new variety?"

Three members of the SOC Committee have checked their copies of the Antwerpen 1 cancel to discover that all distinct copies appear to show this variant of the Flemish spelling.

Can we confirm that all Antwerpen 1 copies are spelt as the illustration below?

Below, Antwerpen 1 machine cancel with SEPTEMS spelling.



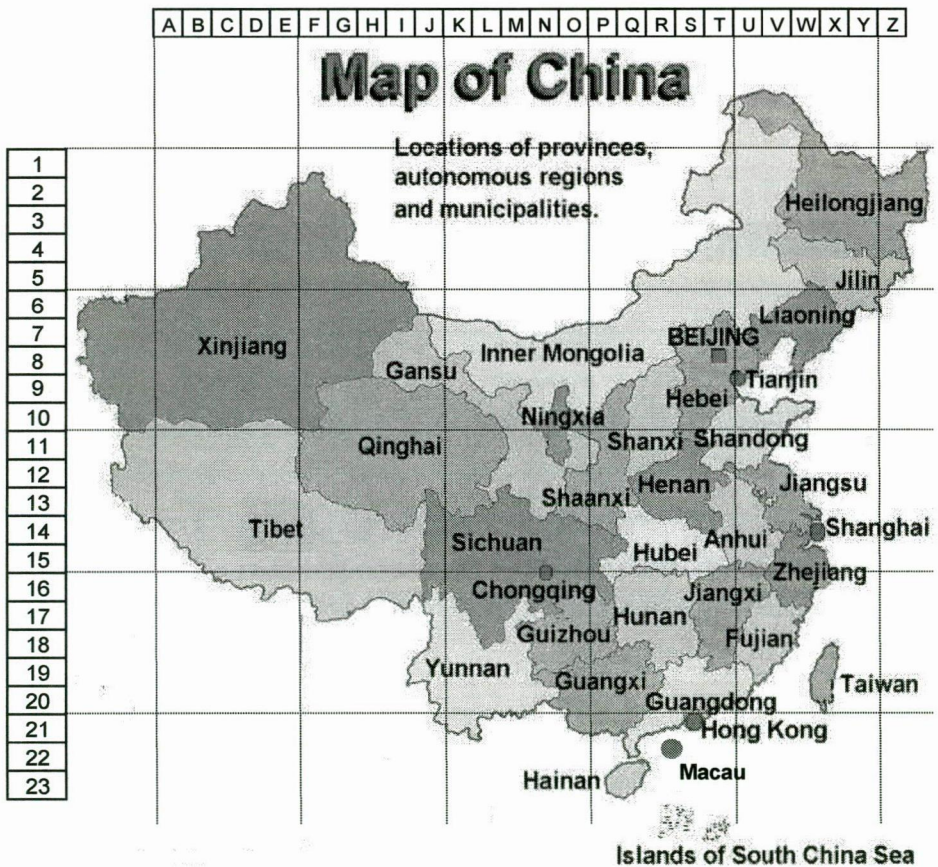
BEIJING 2008 - Some postal 'basics' and translation

To understand the postmarks or the postal operations in China, one must first appreciate the way in which the country is administered.

China is administered as a number of **Provinces, Municipalities, Autonomous Regions and Special Administrative Regions.**

Postal Authorities within these administrative divisions have a high degree of autonomy, which presents a serious problem for collectors, as there is no single source of advance information regarding the use of commemorative postmarks, or indeed regional Postal Authority souvenirs or local 'products'.

The map below and table opposite locate and identify the administrative divisions.



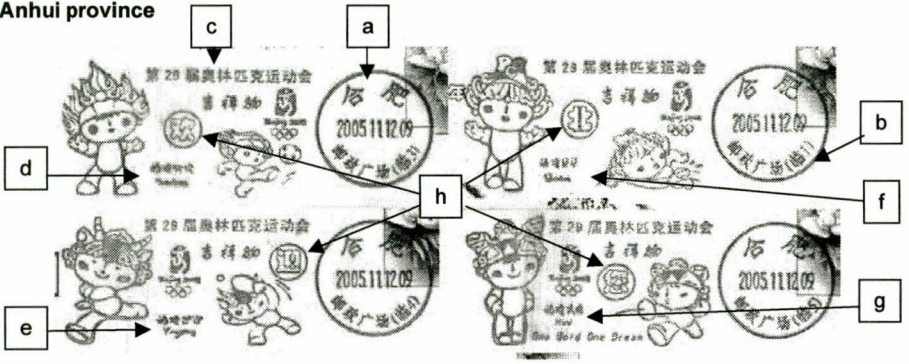
<u>Province</u>	<u>Grid</u>	<u>Capital</u>	<u>Principle Cities</u>
Anhui Province	U14	Hefei	Huangshan; Bengbu; Tongling; Ma'anshan
Fujian Province	V18	Fuzhou	Xiamen; Zhangzhou
Gansu Province	J8	Lanzhou	Dunhuang; Jiayuguan; Jiayuguan
Guangdong Province	S20	Guangzhou	Guangzhou; Chaozhou; Dongguan; Shantou; Shenzhen; Shunde; Zhuhai;
Guizhou Province	O18	Guiyang	Anshun; Zunyi
Hainan Province	Q23	Haikou	Sanya
Hebei Province	S9	Shijiazhuang	Cangzhou; Chengde; Qinhuangdao (Includes Beidaihe and Shanhaiguan); Tangshan; Baoding; Zhangjiakou
Heilongjiang Province	X3	Harbin	Haiaer; Mohe; Mudanjiang; Qiqihar; Suifenhe
Henan Province	S12	Zhengzhou	Anyang; Kaifeng; Luoyang; Sanmenxia
Hubei Province	R14	Wuhan	Huangshi; Shiyang; Shashi; Xiangfan; Yichang;
Hunan Province	R17	Changsha	Changde; Dayong; Hengyang; Xiangtan; Zhangjiajie
Jiangsu Province	V12	Nanjing	Nanjing, Lianyungang; Suzhou, Wuxi; Zhenjiang.
Jiangxi Province	T16	Nanchang	Jiujiang; Lushan, Jian, Jingtangshan
Jilin Province	X5	Changchun	Jilin; Tuman; Yanji
Liaoning Province	W7	Shenyang	Shenyang; Dalian; Dandong; Anshan, Wafangdian
Qinghai Province	H11	Xining	
Shaanxi Province	P13	Xi'an	Xiayang; Baoji; Hanzhong;
Shandong Province	U11	Jinan	Weihai, Dezhou; Linyi; Qingdao; Qufu; Tai'an; Yantai
Shanxi Province	O13	Taiyuan	Datong; Linfen; Yangquan
Sichuan Province	M14	Chengdu	Chengdu; Emeishan, Zigong; Daxianshi
Yunnan Province	L19	Kunming	Kunming, Dali; Simao; Xishuangbanna
Zhejiang Province	W15	Hangzhou	Hangzhou, Jiaxing; Ningbo; Shaoxing; Wenzhou;

<u>Municipalities</u>		
Beijing	T8	China's Capital
Chongqing	N15	
Shanghai	W14	
Tianjin	U9	

<u>Autonomous Regions</u>			
Guangxi Zhuang	P19	Nanning	Beihai; Guilin; Liuzhou
Inner Mongolia	O8	Hohhot	Baotou; Chifeng; Wuhai
Ningxia Hui	N10	Yinchuan	Shizuishan
Tibet (Xizang)	D14	Lhasa	Xigaze
Xinjiang Uygur	I8	Urumqi	Kashgar; Turfan

<u>Special Administrative Regions</u>	
Hong Kong	Y21
Macao	X22

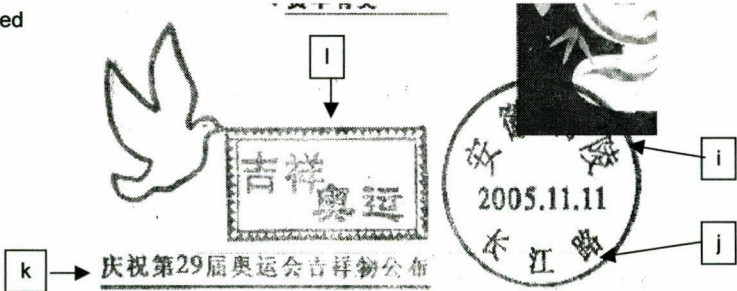
Anhui province



Struck in red

- a** Hefei – in the upper cycle (a city in Anhui province)
- b** Postal Services Plaza (Temporary + #) – in the lower circle. (“Temp” seems to be a temporary post, which could mean a counter for use of the specific postmark.)
- c** Mascot for the 29th Olympic Games, Beijing 2008.
- d** Huanhuan **e** Yingying **f** Beibei **g** Nini
- h** The Chinese characters inside these circles refer to those with the same pronunciation as the single names of the relevant mascot. To compile 'Beijing welcomes you', is not a simple case of adding the characters, but their pronunciation.. Actually, most of the Chinese characters for “Beijing welcomes you” (北京欢迎你) are different from Bei Jing Huan Ying Ni (北京欢迎你) (The words huan & ying are the same in both versions.)

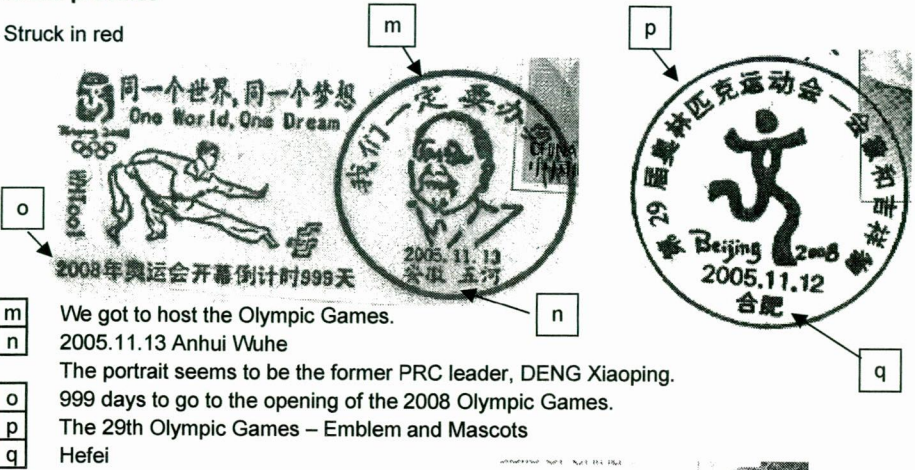
Struck in red



- i** Anhui Tongling **j** Yangtze Road
- k** To commemorate the unveiling of the Mascots for the 29th Olympic Games.
- l** Good luck to the Olympic Games

Anhui province

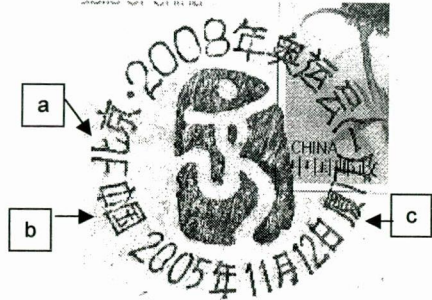
Struck in red



- m** We got to host the Olympic Games.
- n** 2005.11.13 Anhui Wuhe
- o** The portrait seems to be the former PRC leader, DENG Xiaoping.
- p** 999 days to go to the opening of the 2008 Olympic Games.
- q** The 29th Olympic Games – Emblem and Mascots
- r** Hefei

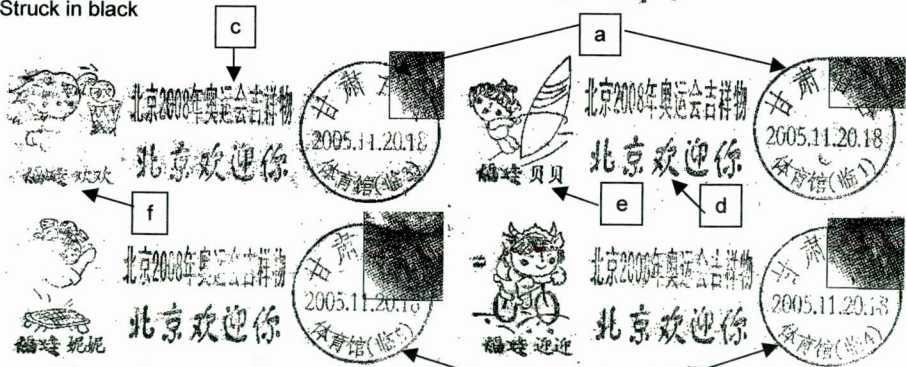
Fujian province

- a** Beijing 2008 Olympic Games (1)
- b** China / 2005NOV12
- c** Xiamen



Gansu province

Struck in black



- a** A post office in Gansu province.
(No exact transaction of the name of that post office "□□".)
- b** Stadium (Temporary + #)
It seems to be used in a temporary post counter in a stadium for a particular function.
- c** Mascot for the Beijing 2008 Olympic Games
- d** Welcome to Beijing
- e** Beibei
- f** Huanhuan

第29届北京奥运会
会徽吉祥物邮票发行纪念



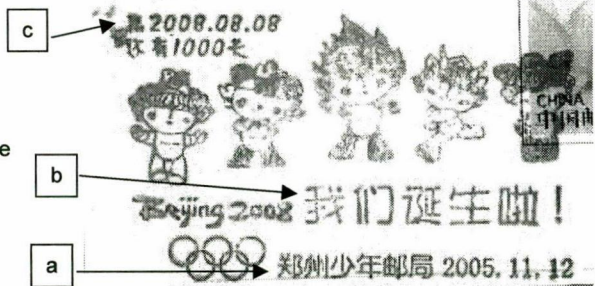
Hebei province

Struck in black

- a China . Qinhuangdao 2005.11.12
- b To commemorate the unveiling of the emblem and Mascots for the 29th Olympic Games, Beijing 2008.

Henan province

Struck in red



- a Zhengzhou Youth Post Office 2005.11.12
- b We are born!
- c 1000 days to go

Jiangxi province

Struck in black



- a Emblem and Mascots for the Beijing 2008 Olympic Games.
- b Jiangxi 2005.11.12 Xinjian (Temporary)
- c Mascots for the Beijing 2008 Olympic Games.

Jilin province

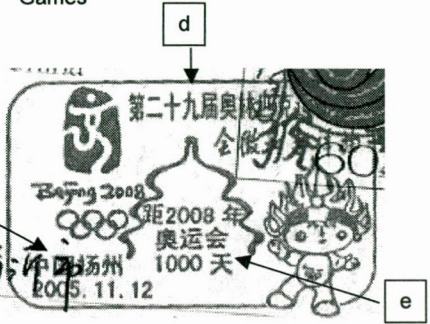
Struck in red



- a China . City of Jilin 2006.11.16
- b The Frenidies, Mascots for the Beijing 2008 Olympic Games.
- c Beibei
- d Huanhuan
- e Yingying
- f Jingjing
- g Nini

Jiangsu Province

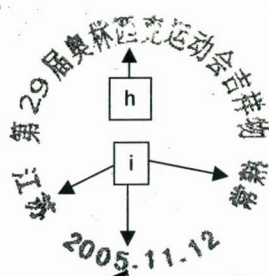
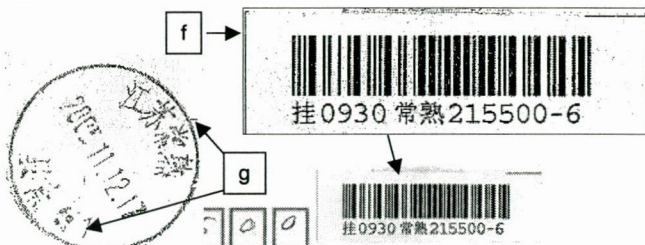
- a China 2005.11.12 Wuxi
- b Emblem and Mascots for the 29th Olympic Games.
- c China, Yangzhou
- d The 29th Olympic Games – Emblem and Mascots.
- e 1000 days to go to the 2008 Olympic Games



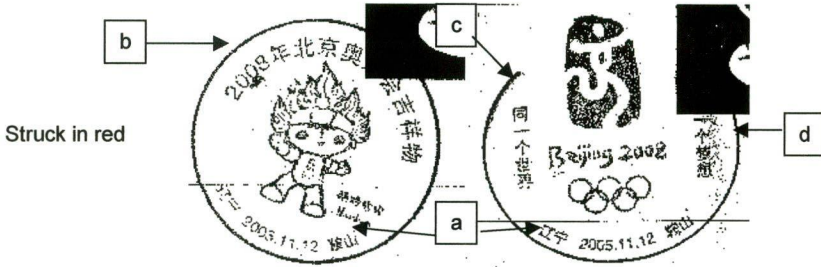
Struck in black

Struck in red

- f Registration label for Changshu
- g Jiangsu Changshu
- h Mascots for the 29th Olympic Games
- i Jiangsu / 2005.11.12 / Changshu



Liaoning province



Struck in red

- a** Liaoning, 2005.11.12, Anshan. (Anshan is a city in Liaoning province.)
- b** Mascot for the 29th Olympic Games, Beijing 2008
- c** One World
- d** One Dream

Shandong Province

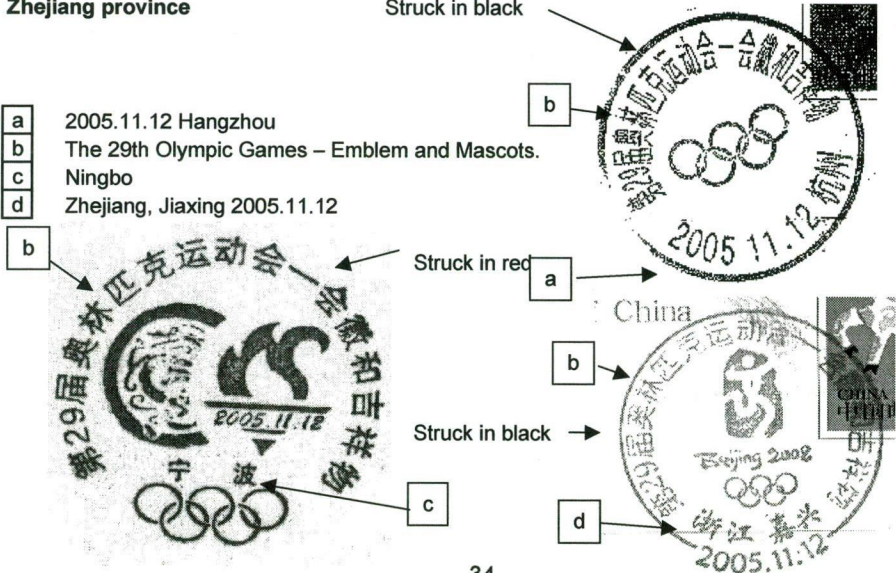
Struck in black



- a** Jinan

Zhejiang province

Struck in black



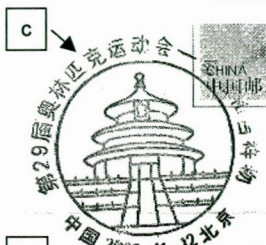
- a** 2005.11.12 Hangzhou
- b** The 29th Olympic Games – Emblem and Mascots.
- c** Ningbo
- d** Zhejiang, Jiaxing 2005.11.12

Struck in red

Struck in black

Beijing Municipality

a Beijing Zizhuyuan Post Office
b To commemorate the unveiling of the mascots for the 29th Olympic Games, Beijing 2008. 2005.11.11



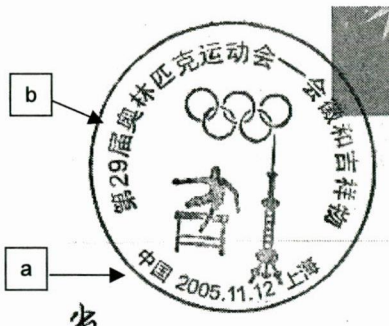
Struck in red

c The 29th Olympic Games – Emblem and Mascots.
d China 2005.11.12 Beijing.
 The design is the Temple of Haven in Beijing.

Struck in black

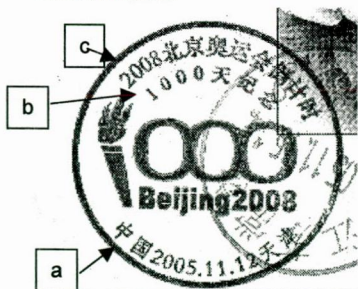
Shanghai Municipality

a China 2005.11.12 Shanghai
b The 29th Olympic Games – Emblem and Mascots.



Tianjin Municipality

Struck in black

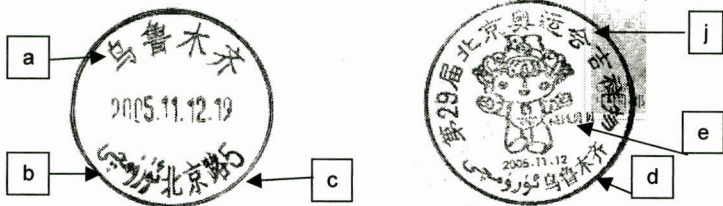


a China 2005.11.12 Tianjin
b 1000 days to go
c Countdown for the 2008 Olympic Games in Beijing.
d The Emblem and Mascots for the 29th Olympic Games.



Xinjiang Uighur Autonomous Region

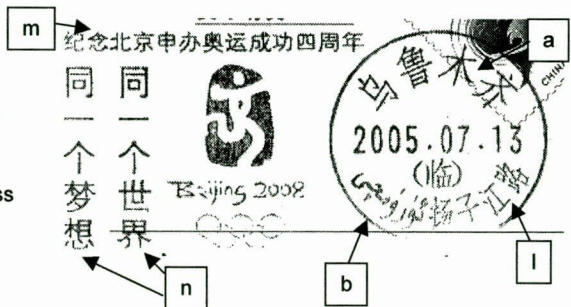
Struck in black



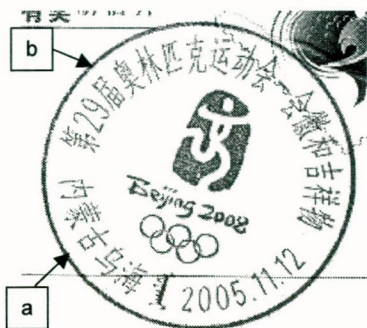
- a Urumqi (Capital city of the Xinjiang Uighur Autonomous Region)
- b "Urumqi" in the script used in Xinjiang.
- c Beijing Road 5 (Probably the name of the post office location in Urumqi.)
- d Urumqi
- e Beibei
- f Huanhuan
- g Yingying
- h Jingjing
- i Nini
- j Mascot for the 29th Olympic Games, Beijing 2008.
- k Emblem of the 29th Olympic Games, Beijing 2008.



- l Yangtze Road (Temporary)
Again, this cancellation seems to be used in a temporary post office.
- m To commemorate the 4th Anniversary of Beijing's success in becoming the host of the Olympic Games
- n One World One Dream



Inner Mongolia Autonomous Region



Struck in red

- a** Inner Mongolia, Wuhai
- b** The 29th Olympic Games – Emblem and Mascots.

As can be seen from the preceding pages, where a selection of the postmarks used in November 2005 are again illustrated with translations of the Chinese script, commemoration of the XXVIII Olympic Games by the postal authorities is not restricted to either the Beijing or venue locations.

Attempting to catalogue the postal markings for these Games will prove very difficult, and be dependant upon information flowing from the various administrative divisions of China - most likely via the internet and specifically via auction sites where such items tend to appear fairly soon after issue.

Currently, reporting of postal activities is heavily reliant upon a small band of regular vendors on auction sites, and it is hoped that these relationships will allow future updates.

Translation and commentary on the content of the Chinese script has kindly been provided by member Ellis Kwon.

Diary note:

2006 May 6 - SOC Display at Thatcham and District Philatelic Society Stamp Fair

(Newbury, Berkshire). At the Ground Floor Atrium of the Bayer Building, Strawberry Hill in Newbury between 10:00am and 4pm

(see www.tdps.org.uk for further details).

Remember the Society International Packet when disposing of your duplicate material. The Packet Manager would be pleased to forward the rules for circulation or template for submitting your material. Subscribe now to add your name to the circulation list.

AUSTRIA POST at the XXth OLYMPIC WINTER GAMES

Thanks to Thomas Lippert, and his diligence in searching the internet before setting off for Turin, we were aware that Austria Post would have a presence at Sestriere in the 'Austria House'.

Thomas was able to visit Austria House on the 11th. February enroute to attend an event at Pragelato. Austria Post were found located in a corner of the dining area, and the range of items available related to the Torino Olympic Winter Games was quite surprising.

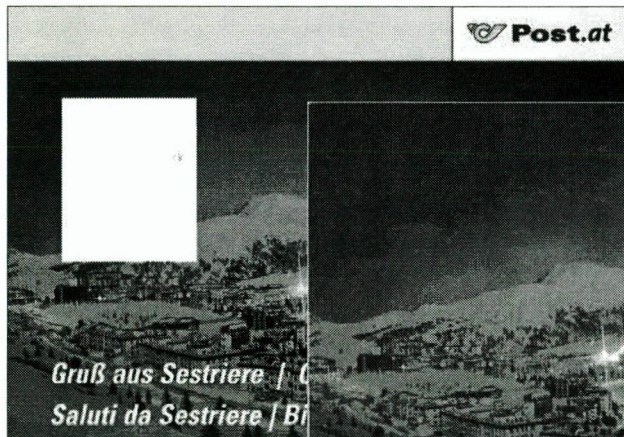
Free postcards were available published by Austria Post and the Austrian Olympic Committee, including one to promote Salzburg 2012.

A commemorative postmark was available (see front cover) with changeable date, and mail could be despatched with Austria Post to be taken to Vienna by staff as their 'tour of duty' concluded. Staff seemed to travel back to Vienna every other day because deposited mail did not seem to suffer any great delay.

Austria Post in conjunction with OSD the State Printers, were also issuing stamps for all Austrian Medal Winners. These stamps are postally valid, but are sold at a premium in a similar manner to 'Smilers' or 'P' stamps in many countries. These stamps are not included in subscription items by the Philatelic Bureau. Stamps were printed in sheets of 20, and sold at €1.00 for a face value of 55c. (Current internet order price is €2.00 for individual stamps of 55c. face value).

Only one winner design had been issued at the time of this first visit, however individual designs for 'Austria House 2006', and 'Salzburg 2014' were also available.

A composite sheet of 20 designs celebrating the 70th. birthday of Toni Sailer was also available which included a number of designs for his achievements at the 1956 Olympic Winter Games in Cortina.



Left: Greetings from Sestriere postcard type 1

Right: Greetings from Sestriere postcard type 2





Austrian Medal Winners at the XXth Olympic Winter Games (February issue date in brackets)

Row one, left to right:
 Felix Gottwald (11)
 Michael Walchhofer (12)
 Reinfried Herbst (14)
 Rainer Sconfelder (15)
 Michaeler Dorfmeister (16)

Row two, left to right:
 A. & W. Linger (16)
 Mario Stecher (17)
 Michael Gruber (17)
 Christoph Bieler (17)
 Hermann Maier (20)

Row three, left to right:
 Andreas Kofler (20)
 Thomas Morgenstern (20)
 Martin Koch (21)
 Andreas Widholzl (21)
 Alexandra Meissnitzer (21)

Row four, left to right:
 Siegfried Grabner (22)
 Benjamin Raich (23)
 Marlies Schild (23)
 Nicole Hosp (27)
 Mikhail Botvinov (27)



Left: Austria House, Olympia 2006 stamp with Sestriere cancel.

A second visit to Austria House on the 23rd. February, coincided with the issue of the 17th and 18th Austrian Medal Winners stamps!

On this occasion (prompted by Thomas, who was now back home), an enquiry was made about the availability of a Registered Mail service. Following a positive response, and a successful search for registration labels and receipts, two series of covers were prepared to utilise the 18 stamps issued. Covers were franked at €2.75 (5 x 55c.), an overpayment of 10c. because there were no 45c. values available, although a reasonable stock of recent issues were held. With only three days remaining, and no previous requests, these covers are possibly unique.

Twenty Medal Winner stamps were produced by the close of the XX Olympic Winter Games, reflecting the success of the Austrian Team. This number facilitated the issue of a composite sheet on March 14, 2006 containing all 20 designs (see front cover). It is currently offered by Austria Post at €25.00.



Left: Postcard of Austria House, olympia 2006 turin

Below: Postcard for Salzburg 2014 'Looking forward to seeing you!'

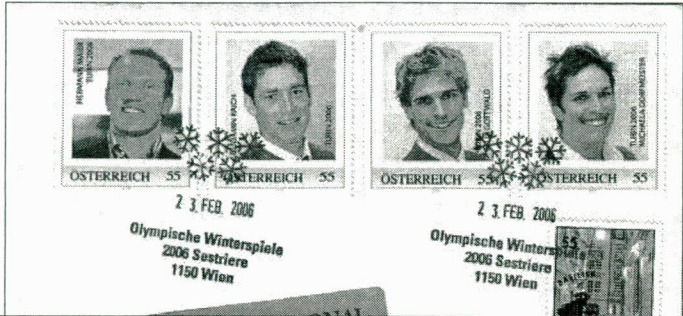
Below: Salzburg 2014 stamp with Sestriere cancel.



*Wir freuen uns auf Sie!
Looking forward to seeing you!
Ci vediamo!
Nous nous réjouissons de vous voir!*

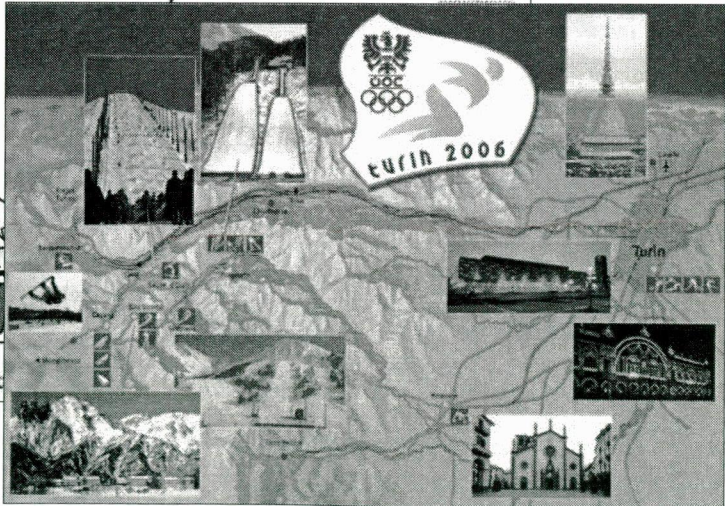


Right & Below:
Registered covers
from the temporary
post office at Austria
House, Sestriere



Farley
Wain Green
ing Meadow
Croaster, WR4 OHP
reat Britain

Lower left &
Below: Back and
front of Austrian
Olympic
Committee
postcard for the
XXth Olympic
Winter Games
(210 x 149mm.)



1956 MELBOURNE Olympic Challenge: Gold, Silver, Bronze!

Bob Wilcock

This is the fifth part of the series of articles dealing with the Melbourne Olympic slogans, with the added bonus of some real challenges!

Canberra (Gold)

As was mentioned in the very first article (Volume 19, Issue 1, February 2002) there was just one die issued to Canberra. It is known with the dater inverted, and with the slogan inverted.







It has however never been seen used, in red, with a 'PAID' marker. **Can any one produce an example, and meet the gold medal challenge?**

Hobart (Silver)

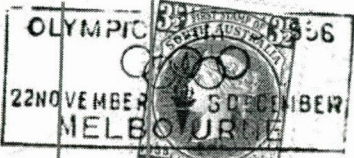
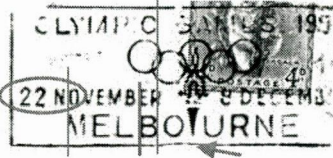

4 dies were allocated to Hobart, Tasmania. Despite our best efforts – more than 30 examples have been examined – we have been able to identify only three. As can be seen below, those three are easily distinguished. There are inevitably some differences from strike to strike, but these differences seem to be normal variations according to inking, and paper absorbency and thickness.

We have also seen examples from only 3 machines: Hobart 2, Hobart 3, and Hobart Paid. (The dater die in the Hobart 2 machine changed towards the end of 1955.) The Olympic dies do move from machine to machine for the different periods of use, as they do in the other cities. We shall be delighted should a reader turn up an example of a fourth die, but it seems that if there were four machines, one of them was a reserve machine, rarely if ever brought into use. The fourth die may have been intended for that machine but may never have been taken out of its packaging, and so never entered the rotation.

Daters

	<p>H2A HOBART 2/2 (smaller) TAS.AUST [1954 to late 1955]</p>		<p>H3</p>
	<p>H2B HOBART 2/2 (larger) TAS.AUST (smaller; short stroke on 1st</p>		<p>HP1 (red)</p>

The Olympic Dies

	<p>HB1</p>	<p>'22' has even numerals close to 'N' The start of the 'M' of MELBOURNE coincides with the end of the 'O' in NOVEMBER The 'B' of MELBOURNE starts after the 'E' of NOVEMBER</p>
	<p>HB2</p>	<p>The second '2' of '22' is fractionally taller and the numerals are well spaced from the 'N' The start of the 'M' of MELBOURNE falls between the 'N' and 'O' of NOVEMBER The 'B' of MELBOURNE starts below the 'E' of NOVEMBER There is a kink in the bottom border line.</p>
	<p>HB3</p>	<p>The first '2' of '22' is taller and the numerals are well spaced from the 'N' The start of the 'M' of MELBOURNE is towards the end of the 'O' in NOVEMBER The 'B' of MELBOURNE starts under the 'E' of NOVEMBER</p>
<p>Still to be identified.</p>	<p>HB4</p>	

The silver medal challenge is to fill that HB4 box. Do you have an example of the mystery die? If you are not sure, please submit a copy anyway; closer examination may prove that you have indeed struck silver, if not gold!

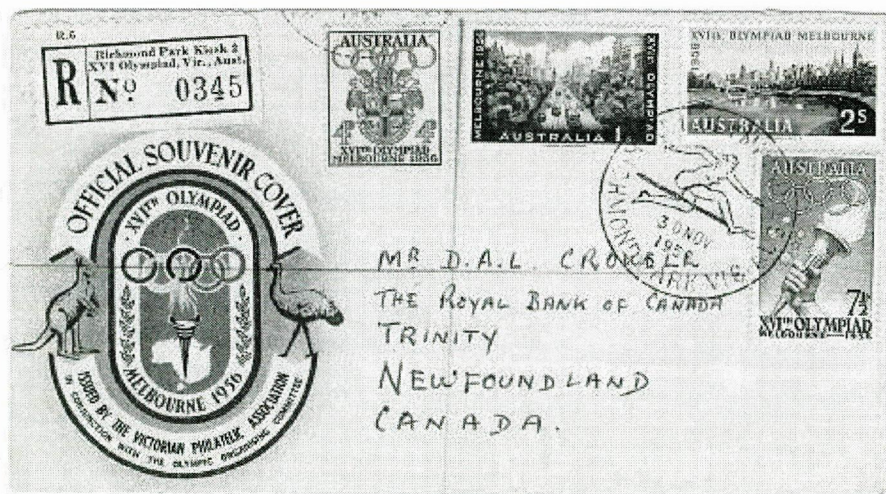
Registered Mail from the Olympic Post Offices (Bronze, Silver, Gold!)

In Torch Bearer Volume 20, Issue 4, November 2003 we published the superb article by Richard Breckon setting out his researches into the temporary post offices in Melbourne during the Games. Within the article he set out the number of registered mail items as follows:

Olympic Village	2994
Ballarat Village	216
Main Stadium	1301
Main Stadium (Press)	1858
Olympic Park	436
Olympic Park (Press)	352
Richmond Park	440

Melbourne Airport	95
Exhibition Building	178
St. Kilda Town Hall	80
Lake Wendouree	99
St. Kilda Pier	158
Mobile PO No 1	143
Mobile PO No 2	24

Evidence from registered covers examined shows that these numbers will be minimum numbers. The Olympic Park (Press) total is made up of 77 articles registered at the post office plus 275 received from the Philatelic Bureau. The Main Stadium (Press) figure may or may not include mail from the Bureau; it is recorded that mail was sent to both offices for special cancels, the staff there being underemployed, and the Bureau over-stretched. Likewise the Richmond Park Kiosk: the highest registration number seen for Kiosk 1 is 2535, envelopes frequently have the handstamp number written on them, and those handstamps more often than not are Main Stadium or Olympic Park, as they are for covers with the Kiosk 3 registration labels. The Kiosk 2 cover illustrated, with a Richmond Park handstamp is, it seems, quite a rarity:



Another interesting "oddy" is the registered cover with the Station Pier registration label. At the last minute plans to open this post office were abandoned. The Philatelic Bureau announced they would honour postal requests for the handstamp. The registration labels were also sent to the Bureau, and it is clear that some were used, as the cover shows, though it is not known how many.

The Challenge!

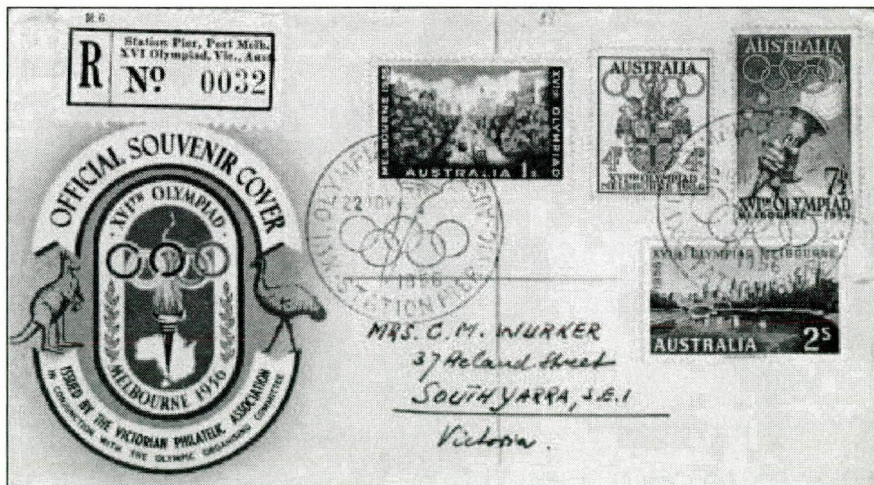
Registered covers from the two Press offices, Richmond Park (Kiosks 1 & 3) and the Olympic Village turn up regularly, although they are not common, and not cheap. All the others are decidedly rare. Uwe Kruger in Australia and myself are preparing the 200 page plus book on the philately of Melbourne 56, and hoping to publish by November, the 50th Anniversary of the Games, and despite assistance from a number of collectors around the world, we have been unable to find examples of registered covers from all the post offices. **The challenge therefore is to ask if you have examples of the registered covers we lack:**

Bronze: Main Stadium (surprisingly elusive)
Silver: Olympic Park
Ballarat Village
St. Kilda Town Hall
St. Kilda Pier
Gold: MELBOURNE AIRPORT.

If you have a Canberra 'PAID', or the fourth die from Hobart, or any of these registered covers I should be very grateful for colour photocopies, or, preferably, high resolution colour scans.

By post, please send to Bob Wilcock, 24 Hamilton Cres., Brentwood, Essex, CM14 5ES
Or send scans by e-mail to bob@towlard.freemove.co.uk

Thank you for your help.



(Illustrations by Bob Wilcock, Uwe Kruger and Tom D'Arcy)

SOC SUMMARY of ACCOUNTS

As announced in the November issue, a summary of the Society of Olympic Collectors accounts is presented below:

Income & Expenditure Accounts for the Year Ended 31 January 2005

<u>Income</u>	2005	2004
Subscriptions	1506.94	1580
Adverts	54.73	90
Back Issues of torch Bearer	0	10
Auction	441.47	758
S.O.C. Sales	717.35	18
Packet Sales	294.25	0
Much Wenlock 20th Anniv. Event	630	0
Interest	30.14	17
Expenditure over Income	257.75	595
	<u>3932.63</u>	<u>3068</u>
<u>Expenditure</u>		
Administration	226.31	222
Insurance	166.15	166
Table & Room Hire	140	253
Printing and Distribution of Torch Bearer	1356.39	1396
Much wenlock 20th Anniversary	858.07	0
Library Purchases	16.49	10
Website	31.15	246
Auction	452.2	758
S.O.C. Sales items at Cost	535.63	17
Packet Sales	149.94	0
	<u>3932.33</u>	<u>3068</u>
Bank Balance as at 31 January	5325.77	5124
Less Advanced Subs	-459	0
	<u>4866.77</u>	<u>5124</u>
Balance B/Fwd	5124.52	5719
Expenditure over income	-257.75	-595
	<u>4866.77</u>	<u>5124</u>

The most notable variances from the norm are:

Cost incurred for the 20th. Anniversat event in Much Wenlock - a 'one off' cost.

Income generated from sales, generally as a result of SmartStamp souvenirs - with the potential for a regular future income stream, from both internal and external sales as a result of publicity in the general philatelic press.

Society of Olympic Collectors – 2004-5 Souvenirs

Olympic Torch Relay London – 26th June 2004

Ref	SS1	Torch Relay SmartStamp	Price (£)	Number	Amount
No	[SmartStamp Series 1 indicia]				
SS1a/b	2 nd + 7p - Wimbledon Park or Brixton handstamp (reduced price - SS fine but handstamp indistinct)		£1.20		
SS1d	2 nd + Canary Wharf handstamp		£1.50		
SS1c	2 nd + Greenwich h/s (tourist postcard)		£1.50		
	Cover with 'Smiler'				
PC1	Postcard – Andrew Lindsay (unused)		£0.60		

Much Wenlock SOC 20th Anniversary 10-11 July 2004 / William Penny Brookes

SS3	COV 1 Cacheted cover with SmartStamp SS3	£1.80
PC3+SS3	SOC Wenlock postcard with SmartStamp SS3	£1.80
PC2+HS3	Penny Brookes p/c with SOC/WOS handstamp	£1.80
PC3	SOC Wenlock postcard (unused)	£0.60
PC3+HS3	SOC Wenlock p/c with SOC/WOS h'stamp	£1.80

Olympic Medal Winners Athens 2004

Gold Medal Handstamp 29 August 2004		
PC4	Handstamp on Torch Relay postcard	£1.80
SS5	Olympic Gold Ball 12 October 2004 [SmartStamps - Series 2 indicia] Cacheted cover COV 3 with SmartStamp	£1.80
SS6	Olympic and Paralympic Parade and Medal Ceremony 18 October 2004	
SS6a / COV 4	Cacheted cover with SmartStamp SS6 (2 nd) +7p stamp postmarked Trafalgar Square	£1.50
SS6b	On Gold Medals postcard (2 nd + 7p Traf. Sq.)	£1.50
SS6j	English A + RP on Cov 4	£5.00
SS6j	English SU to USA	£1.80

London 2012

SS7 London 2012 Bid Book 15 November 2004		
SS7a	Cov 5 2 nd Class + 7p Canary Wharf	£1.80
SS9 IOC Evaluation Commission Visit – London 2012 Bid		
SS9a	Cov 7 (Palace) 2 nd Class + Canary Wharf h/s 160205	£1.50
SS11 50 days to go 17 May 2005		
SS11	Cov 9, English 1 st Class	£1.50
SS12 Centenary of British Olympic Association – SmartStamp cover & BOA meter		
SS12 & M	BOA Centenary, SmartStamp (1 st) & meter (2 covers)	£2.50
SS13 11th Session IOC – London 2012 Stadium		
SS13a	2 nd Class + Trafalgar Sq – fair copies	£1.50
SS13aa	2 nd Class + Trafalgar Sq – fine copies	£2.50
SS13b	1 st Class	£2.50
SS13ca	Airmail to Paris (+ Revenue Protection large size)	£4
SS13cb	Airmail to Singapore	£5
SS13d	Reg'd Air T Sq to Singapore (C5 cacheted envelopes)	£15
SS14 Congratulations London		
SS14aa	1 st Class – 7 July - (+ Revenue Protection small size)	£4
SOC London 2012 FDC 5 August 2005		
HS 9738	single stamp only on illustrated cover – post paid	£2.50
Various	Set of 17 cancels on illustrated covers & on cards	£40

Postage	Great Britain	Europe	Rest of world	
1-5 items	£0.50	£0.70	£1.00	
6+ items	£0.80	£1.50	£2.50	
				Add postage £
				Total remittance £

Name:
 Address:
 Postcode:

Please send orders & remittance to **R.J. Wilcock, 24 Hamilton Crescent, Brentwood, Essex, CM14 5ES.**
 Please make cheques payable to Society of Olympic Collectors. Alternatively payment may be made by Paypal to pay@societyofolympiccollectors.org. Please make payment in Sterling.



Olympic Games Memorabilia

Auctions

Want List Service

Appraisal Service

Exhibit Service

Always buying, selling & accepting consignments:

Torches, Winners' and Participation Medals,
Pins, Badges, Diplomas, Posters, Official Reports,
Programs, Tickets, Souvenirs.

Three Auctions per Year - Catalogs available.

Ingrid O'Neil

Sports & Olympic Memorabilia

PO Box 872048, Vancouver WA 98687 USA

Tel. (360) 834-5202 ♦ Fax (360) 834-2853

www.ioneil.com ♦ ingrid@ioneil.com



OLYMPIC COLLECTORS AUCTION

Philatelic • Numismatic • Phonocards • Postcards • Posters • Pins • Badges
Medals • Torches • Tickets • Programs • Official Reports • Bid Books

By Olympic Collectors for Olympic Collectors

No commission charges for buyers • Low commission charges for vendors

On the Internet at www.coubertin.com