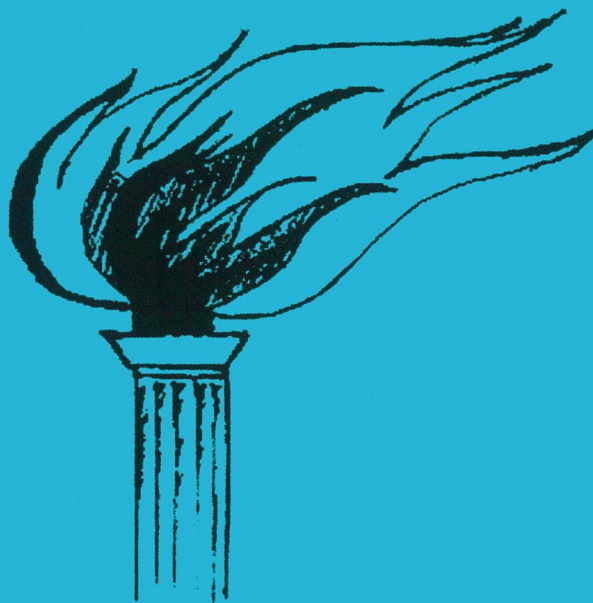


Volume 17 Issue 3

TORCH BEARER



SOCIETY of OLYMPIC COLLECTORS

SOCIETY of OLYMPIC COLLECTORS

The representative of F.I.P.O. in Great Britain

PRESIDENT: Mrs Franceska Rapkin

YOUR COMMITTEE

CHAIRMAN AND EDITOR :	Bob Farley, 3 Wain Green, Long Meadow, Worcester, WR4 0HP, Great Britain.
VICE CHAIRMAN :	Bob Wilcock, 24 Hamilton Crescent, Brentwood, Essex, CM14 5 ES, Great Britain.
SECRETARY :	Miss Paula Burger, 19 Hanbury Path, Sheerwater, Woking, Surrey, Great Britain.
TREASURER AND ADVERTISING :	David Buxton, 88 Bucknell Road, Bicester, Oxon, OX6 8DR, Great Britain.
AUCTION MANAGER :	John Crowther, 3 Hill Drive, Handforth, Wilmslow, Cheshire, SK9 3AP, Great Britain.
LIBRARIAN :	Ken Cook, 31 Thorn Lane, Rainham, Essex, RM13 9SJ, Great Britain.
P. R. O.:	Brian Hammond, 6 Lanark Road, Ipswich, IP4 3EH
BACK ISSUES AND DISTRIBUTION:	John Miller, 258 Torrisholme Road, Lancaster, LA1 2TU, Great Britain.

BACK ISSUES: At present, most issues of TORCH BEARER are still available to Volume 1, Issue 1, (March 1984), although some are now exhausted.

As stocks of each issue run out, they will not be reprinted. It is Society policy to ensure that new members will be able to purchase back issues for a four year period, but we do not guarantee stocks for longer than this. Back issues cost £2.00 each, or £8.00 for a year's issues, including postage by surface mail. If ordering single copies, please indicate which volume you require. Cheques should be made payable to the SOCIETY of OLYMPIC COLLECTORS and sent with your order to John Miller at the above address. If you wish to receive back issues by airmail, please add 75 pence per issue (£3.00 per volume).

LIBRARY: Photocopies of articles are available through the Librarian at 10 pence per sheet. Please enclose payment with the order. Books may be borrowed, but postage must be paid IN BOTH DIRECTIONS. The Librarian's address is listed above.

COPY DATES: TORCH BEARER is published four times a year; in February, May, August and November. Articles or adverts for inclusion in a particular issue should be sent at least two months in advance.

CONTENTS

Front Page	98
Members Forum, Poster stickers	99
Sydney 2000 - Australia Post Announcements	100
International Stamps	100
Sports Issue	101
Sydney / Athens Issue	103
Gold Medallist Issues	104
Cancellations	106
Paralympic Issue	109
Stamp Bulletin Order Form	110
News From Members - London Olympic Postmark	110
The Illrd Olympiad, 1904 - St. Louis, Missouri	112
The Wenlock Olympian Games 7/8/9 July 2000	133
Classical Olympia, Athens cancellations 1896-1900	135
Review of Magazines with Olympic Interest.	143

The following members have offered their email addresses for publication:

Alan Sabey ALAN@asabey.freemove.co.uk London 1908 / 1948

Ken Cook kenny@rainham3.freemove.co.uk 1894 - 2012+

and a correction:

Constantinos Varotsis varotsis@ath.forthnet.gr

If you would like your email address published, with or without brief details of your interests please email the editor at: rfarleysoc@aol.com

OLYMPHILEX 2000

S.O.C. Have a meeting room booked during Olympilex for **Saturday 23rd September, 7:00 pm**. For an informal meeting. The venue is about 1km from Olympilex at **Philas House, 17/19 Brisbane Street** - All welcome!

FRONT PAGE

The Sydney Games are almost upon us, and from the 10th August, they have suddenly (and to some extent unexpectedly) become a philatelic as well as sporting event.

Having reported in last issue that there were no known plans for Torch Relay cancels in Australia, news of the nine cancellations reached me just as I collected Torch Bearer from the printer.

This issue had been prepared with minimal Sydney information, including enhancing and enlarging a 22 x 11mm illustration of the 'sports' sheetlet (from the Hong Kong Bulletin!), in an attempt to identify the designs - it was ready for the printer. Then a copy of the domestic version of the Australia Post Stamp Bulletin arrived from Tom D'Arcy. The resulting rewrite is on pages 100 - 110, and is a fairly comprehensive account of the announced programme.

This has resulted in the displacement of about seven pages of contributions from members which will now appear in November. My thanks to those contributors, and apologies for not including the items in this issue, but I trust all of them will understand that much of the Australia Post information will reduce in importance if published later.

The Society has a meeting room in Sydney on the 23rd September (see index page), it will give an opportunity to socialise, discuss events of the first week, and perhaps agree a plan of campaign for the remainder of the Games. If you are in Sydney, do please try to come along - it is sure to be a friendly gathering, refreshments will be available, and it is air conditioned.

Torch Bearer 2000 Special Issue, a 56 page, A4 spiral bound volume, will be available at Olympihlex, and as the enclosed insert order form - note the availability on CD - a new venture enabling purchasers to produce their own full colour copy. comments will be welcomed.

1936 Fritz Schlugen
1948 John Mark
1952 Paolo Nurmi
1955 Ron Clarke
1960 Giancarlo Perle
1964 Yoshinori Sakai
1968 Norma Enriquesta Basilio
1972 Gunter Zahn
1975 Stephanie Prefontaine & Sandra Henderson
1989 Sergey Belov
1994 Rater Johnson
1999 Chung Sun-Men, Kim Won-Tuk & Sohn Mi-Chung
1992 Arnoldo Rebolfo
1995 Muhammed Ali
2000 1.27

**Society of Olympic
Collectors, Sydney
2000 Postcard.**

Cost: 60 p., DM 2,
US\$1, AU\$1.50.

Postage (1-5 cards)

U.K. 30p.
Europe 40p.,
DM1.50.
Overseas 70p.,
US\$1.20, AU\$1.80

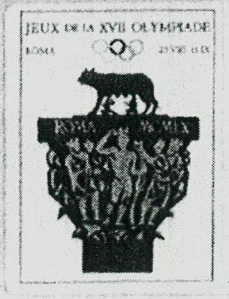
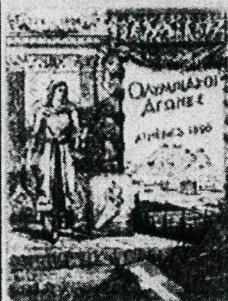
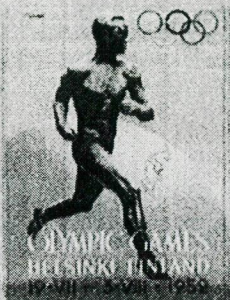
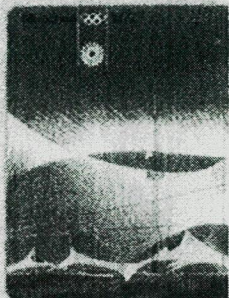
Available from Bob Wilcock, David Buxton or Bob Farley - addresses inside front cover.

MEMBERS FORUM

Alan Sabey writes that he has recently been given a sheet of 18 poster stickers covering the Games from 1896-1976. {twelve illustrated - there are a further two rows of three to complete the block}.

Down the side of each label the text reads:
 HAAL VOOR
 ALLE 18
 OLYMPISCHE
 STICKERS
 GRATIS
 VERZAMELSPEL
 BIJ UW
 WINKELIER
 {Dutch ?}

Alan is seeking information about the publisher, and date of issue.



SYDNEY 2000 - Australia Post announcements

The Australia Post programme was announced in the August issue of the Australian Stamp Bulletin, however there have been two issues in the months of June and July.

The programme includes some innovative items, but also relies heavily on release in differing formats to induce the collector into multiple purchases. It seems that the apparent lack of philatelic material will be more than compensated for during August and September.

International Stamps Issue date: 20th June, 2000.

This issue signals a new category of postage stamp. The issue is intended for payment of postage to overseas destinations, and is the result of General Sales Tax (GST) being introduced. The payment of postage to an overseas destination is free of GST, whereas internal post is subject to GST. This means that a proportion of the stamp sale price has to be accounted for as tax - unless the stamp is only used for overseas mail. The designs of this stamp issue incorporate a clear **International POST** indicator. (How is the taxman collecting the dues from First Day Covers addressed internally, or even unaddressed?)



It is not clear whether these stamps will have definitive or commemorative status, as the full set contains 8 designs which all feature Australian Views, two of the designs also bear the Olympic Rings and Paralympic logo, these two are detailed:

50 c. Sydney Opera House NSW, from photograph by Jean-Marc La Roque / Auscape.

\$1.50 Sydney Harbour Bridge NSW, from photograph by Philip Quirk / Wildlight.

Both designs are landscape format, 42.63 x 18.75 mm. They are lithograph printed by SNP Ausprint, to design layouts by Beth McKinlay, Australia Post Design Studio.

Australia Post provide the following information on their web site:

50 c. Sydney Opera House. Viewed from land, air or sea, the distinctive shape of the Opera House is an instantly recognised symbol of Sydney and of Australia. Its sail-like forms are suggestive of the yachts that sail on Sydney Harbour. Queen Elizabeth II officially opened the Opera House in 1973.

\$1.50 Sydney Harbour Bridge. The image of the single-arch steel bridge framed by its four decorative sandstone towers may be the most universally recognised symbol of Sydney. The bridge connects Sydney with North Sydney and is used for rail, road and pedestrian transport. Construction began in 1923 and on completion in 1932 was the world's largest arch bridge.

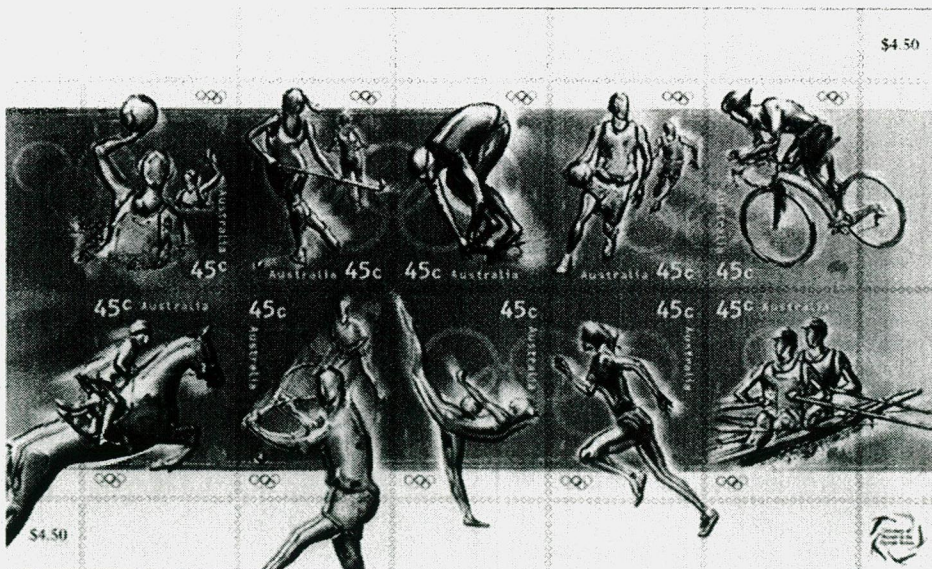
The stamps are printed in sheets of 50 with no gutter.

Issue of the complete set of eight designs, was accompanied by three first day covers; maximum cards and a stamp pack. For the Olympic collector there is however a snag - the popular maximum cards (with post paid indicator), are only available as a full set at \$33+.

Olympic Games Sports Issue Issue date: 17th August, 2000.

This issue of ten stamps features ten sports being contested at the Sydney 2000 Olympic Games.

The following details are taken from the Stamp Bulletin:

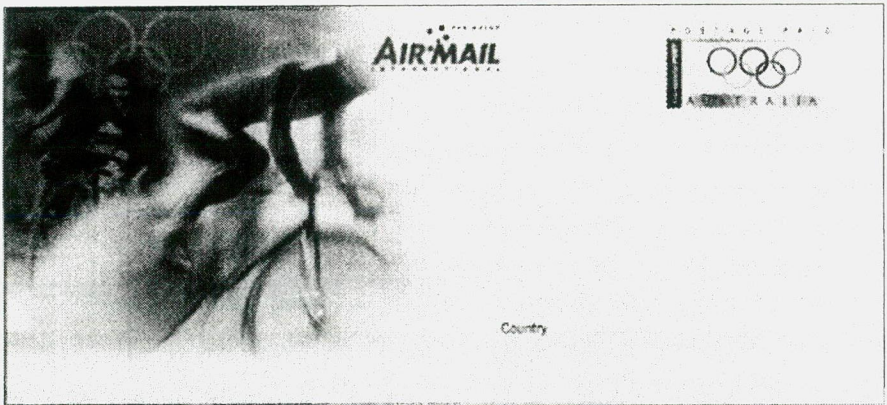


This special stamp issue celebrates the Games of the XXVII Olympiad. The sheetlet of ten stamps captures the variety and vitality of the games themselves.

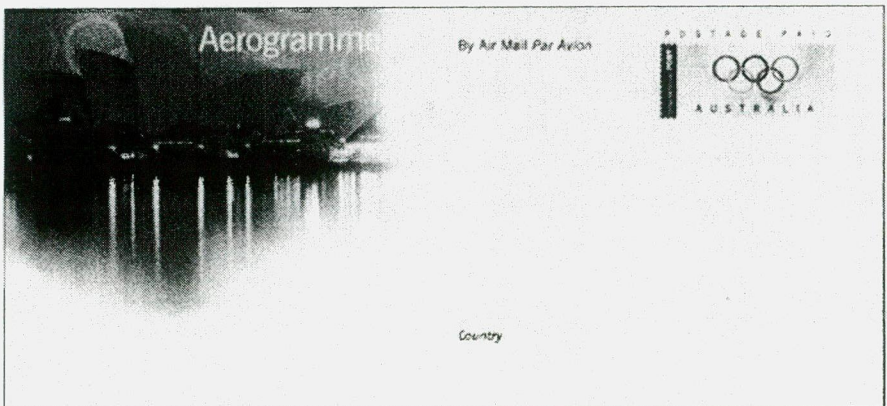
The ten stamps in the issue depict male and female athletes engaged in individual and team sports. The range of sports covers those that are popular in Australia, sports introduced at the 2000 Olympic Games and sports in which Australians traditionally excel.

The design by FHA Image Design, Melbourne, incorporates the Olympic Rings and uses fluid imagery to represent the athletes and communicate the emotion, energy and grace of Olympic competition. The bold multi-coloured background calls to mind the atmosphere of exuberant celebration the Olympics create throughout the world.

The illustrations extend beyond the body of the stamp onto the selvedge. The logo commemorating the Centenary of Women in the Olympic Games is also printed in the selvedge.



Postally Paid Envelope for International use.



Commemorative Aerogramme.

Associated products include a self-adhesive book of ten stamps, a set of first day covers, two stamp and coin covers (Aquatics and Athletics), a sheetlet pack, an international pre-paid envelope, an aerogramme, and a set of ten maximum cards. A blank first day cover is also available.

Depicted on the stamps, clockwise from top left are: water polo, hockey, swimming, basketball, triathlon, rowing, athletics, gymnastics, tennis and equestrian.

This will be the first Olympic Games for women's water polo and the men's and women's triathlon.

10 x 45c. Sports as detailed above, issued as a sheetlet.
Designer: FHA Image Design, Melbourne;
lithograph printed, stamp size: 26 x 37.5 mm.
Perforations: 14.6 x 13.86

Self adhesive version printed by SNP Ausprint.

National postmark: Sydney NSW 2000



Sydney / Athens Issue Joint issue with Greece, issue date: 15th September, 2000.

The Stamp Bulletin offers the following details:

This issue of two stamps commemorates the hand over of the Olympic flag from Sydney to Athens. The flag ceremony symbolises the transfer of responsibility for the Olympic Games to Athens, the host city for the 2004 Olympic Games.

The issue will be launched at Olymphilex 2000. There are two stamps in the issue, the Parthenon - 45 c., and the Sydney Opera House - \$1.50. Both will be available with title tabs (as illustrated above), and with plain selvage for use as P Stamps {*the service whereby a photograph or design can be added to the tab to personalise the stamp sheet - introduced at Melbourne '99* }.

The design uses graphic and photographic images incorporating the Olympic flame, the Olympic flag and views of the two host cities Sydney (2000) and Athens (2004). Shared elements unify the design. The \$1.50 stamp is intended for overseas mail and incorporates the International Post signifier.

Special associated products for this joint issue include the joint first day cover and the joint

stamp pack. These products feature both Australian and Greek stamps in the Sydney / Athens issue.

Sydney / Athens stamps will be available in sets of two sheets, with decorative selvedge and title tabs for \$39.00. Single sheets of stamps with title tabs will be available with normal plain selvedge (\$9.00 for 20 x 45 c.; \$30.00 for 20 x \$1.50). Either stamp can be personalised.

During Olymphilex, a photo can be taken on site and can be used to order personalised Olymphilex special event souvenir (SES) sheets. (Athens \$26.00; Sydney \$47.00). These sheets will have the Olymphilex logo on the selvedge.

A first day cover and maximum cards will also be available.

Illustrator: Lynda Warner, Hobart;
lithograph printed, SNP Ausprint.
stamp size: 30.55 x 30 mm.
Tab size: 20 x 30 mm.
Perforations: 13.86 x 14.28



National postmark: Sydney NSW 2000

Australian Gold Medalists Issue Issue dates from 16th September - 1st October, 2000

This proposed issue makes full use of modern digital technology, and will represent further innovation in the philatelic world - another Olympic and philatelic 'first'.

The following details are taken from the Australia Post web site and the Stamp Bulletin.

In 1998 Australia Post's Philatelic Group set itself a significant goal, *to celebrate each gold medal won by an Australian individual or team during the Sydney 2000 Olympic Games with a stamp available for sale from 12 noon the day after the medal is won.*

Developing the Gold Medalists stamps presented many challenges. The design had to be flexible enough to suit individuals as well as teams, the Australian Olympic Team logo, both male and female winners, differing backgrounds and event names, and incorporate an image taken during the event or in victory. A square stamp, produced in sheetlets of ten, provides the required flexibility and style.

Next the complex, integrated production and delivery process had to be developed to achieve the goal of next day availability.

When a gold medal is won, Allsport (the official Olympic photographer) will send electronic images to Australia Post's Sydney design Studio. The design team will select an image, create the stamp and sheetlet design, then transmit the electronic file to print sites in six capital cities, for digital printing. The file will also be sent for offset printing and to Australia Post's Designers.

An imprint in the lower right hand corner of the sheetlet will identify the printing source. All sheetlets will be printed on pre-perforated paper stock.



AUSTRALIAN GOLD MEDALLISTS

16 SEP 2000
 First Day of Issue
 SYDNEY NSW 2000



NSW



WA



ACT



SA

Digital
 Imprints



QLD



VIC



Offset Imprint

Digital Prints

The instant nature of these stamps relies on recent advances in technology. Once printed, sheetlets from the six digital printers will be sent to 67 outlets, where subject to normal hours of operation and while stocks last, Gold Medallists stamps will be available from 12 noon the day after a gold medal is won. Tasmania and Northern Territory stock will be distributed from Victoria and South Australia respectively.

Offset stamps

This is traditional stamp printing with a high-tech twist. The printing plate will be produced direct from the electronic file instead of making the interim film. This combination of state of the art technology, pre-designed templates, and pre-perforated paper will enable the offset stock to be in post offices throughout Australia from 12 noon three days after the medal is won. Offset stock will replace digital stock as the digital stock is sold. All offset printing will be carried out in Victoria, so a single imprint will identify offset stock.

A First Day postmark with changeable date will be available.

{It is not clear if this postmark will be available with different City names (or even postcodes) to reflect that the issue will be made at 67 outlets across Australia.

It is also not clear if the postmark will be available on two occasions for each design - day of issue of digital, and day of issue of offset.}

Sunday sales and therefore first day cancels will only be genuinely available from: NSW; Sydney GPO, Olympic Village. Western Australia; Main GPO. Queensland; Myer Centre



Cancellation Programme

In addition to the first day cancellations there have been a series of nine cancels to commemorate the Olympic Torch Relay. These are of common design, with appropriate identification and fixed date.

8 June, Yulara, NT; 13 June, Brisbane; 29 June, Darwin; 7 July, Perth; 14 July, Adelaide; 31 July, Melbourne; 2 August, Hobart; 5 September, Canberra; 12 September, Sydney.

Two fixed date cancels showing the Olympic Rings will be used on the 15th September at Olympihelix, and on the 1st October at the GPO Sydney to commemorate the opening day and the closing day of the Olympic Games *{illustrated on page 108}*.



Canoe/Kayak



Cycling



Equestrian



Fencing



Hockey



Judo



Modern Pentathlon



Rowing



Table tennis



Taekwondo



Tennis



Triathlon



Football



Gymnastics



Handball



Boxing



Sailing



Shooting



Softball



Aquatics



Volleyball



Weight lifting



Wrestling



Badminton



Archery



Athletics



Baseball



Basketball

A total of thirty-one changeable date cancellations in addition to the 'Gold Medallists' cancel will be available during the period of the Olympic Games, and these are all illustrated on pages 107-108.

Usage will be as follows *(all three of these venues will operate seven days per week)*:

Olympilex: 15th - 28th September, 2000.

- Twenty-eight 'Olympic Sports Pictograms';
- Olympilex, illustrated with Sydney Opera House and Olympic Rings;
- Centenary of Women in the Olympic Games, illustrated with logo.

GPO Sydney: 29th September - 1st October, 2000. (After closure of Olympilex)

- Twenty-eight 'Olympic Sports Pictograms';
- Centenary of Women in the Olympic Games, illustrated with logo.

Homebush and Queen Victoria Building Post Office, NSW.

2nd September - 4th October, 2000.

- Olympic Village, illustrated with Olympic Rings and flag on pole.

Olympilex

Olympic Village

Centenary of Women
in Olympic Games



Opening day,
Olympic Games

Closing day,
Olympic Games





Sydney 2000 Paralympic Games Issue issue date: 3rd July, 2000.

The Australia Post web site offers the following details:

This issue of five stamps was released to increase awareness of the Games and to commemorate the first Paralympic Games to be staged in the Southern Hemisphere.

Each of the designs shows a stylised image of a paralympian in action. The sports represented are tennis (wheelchair), track (amputee), basketball (wheelchair), cycling (vision impaired), and shot put (amputee). The designs are powerful and dynamic, highlighting the diversity of the athletes and their abilities.

The issue includes a se-tenant pair of 45 c. stamps and a strip of three se-tenant 49 c. stamps with a coloured sevedge. The 49 c. value is designed to be used in combination to make up the new, 'large letter' rates of 98 c, \$1.47, and \$2.45 (one, three or five copies).

The stamps were also issued in self adhesive format, the 45 c. in rolls of 100; the 49 c. in booklets of 10.

2 x 45c. Tennis; Track.

3 x 49 c. Basketball; Cycling; Shot put.

Designer: FHA Image Design, Melbourne;

Photolithograph printed, stamp size: 26 x 37.5 mm.

Self adhesive version printed by SNP Ausprint.

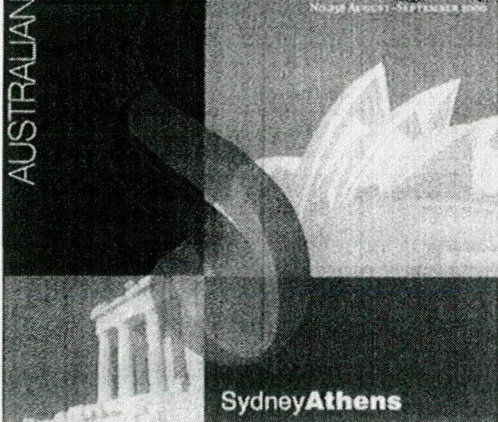

Associated products include a collectors pack, first day cover and set of five maximum cards.

A further issue of two stamps for the Paralympic Games is planned for 18th October, 2000

Stamp Bulletin - No 256 Order Form issued: August, 2000.

Stamp Bulletin No 256 is a superb source of information for the Olympic collector, but the bonus for our Australian members is the superbly illustrated order form in the domestic edition.

This has a POST / Stamps / OFFICIAL MAIL indicator for surface mail, with an illustrated panel promoting the Sydney / Athens joint issue.

<p>stamp bulletin</p> <p>NO 256 AUGUST - SEPTEMBER 2000</p> <p>AUSTRALIAN</p>  <p>SydneyAthens</p>	<p>SURFACE MAIL</p>	<p>POST</p>  <p>OFFICIAL MAIL</p>
<p>Australia Greece Joint Issue</p> <p>Print Post approved No. PP349181/00065 If undelivered, return to: Australian Stamp Distributor, PO Box 4000, PENRITH, QLD 1510, AUSTRALIA. <small>If you are sending outside, please refer to the Publications Board for the correct address.</small></p>		

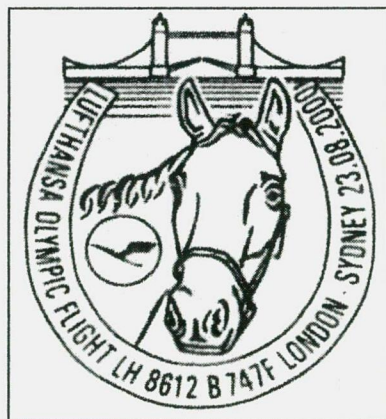
NEWS FROM MEMBERS

Bob Wilcock forwarded details of the illustrated postmark, from details in the Postmark Bulletin.

The cancel will be used on 23rd August, 2000, and it is illustrated with Tower Bridge, a horses head, and the Lufthansa logo. The text:

LUFTHANSA OLYMPIC FLIGHT LH 8612 B747F
LONDON . SYDNEY 23.08.2000

is wrapped around as a horse-shoe.



- ✓ AUCTIONS
- ✓ APPRAISAL SERVICE
- ✓ WANT LIST SERVICE
- ✓ ALWAYS BUYING,
SELLING AND
TRADING

Torches, Winner's Medals,
Participation Medals,
Commemorative Medals,
Badges, Pins,
Bid Pins, Diplomas, Posters,
Official Reports, Programs,
Tickets, Books, Bid Books,
Postcards, Souvenirs etc.

*We travel worldwide for
significant transactions.
Confidentiality Assured
24 Auctions since 1990*

OLYMPIC GAMES MEMORABILIA 1896 - 2004



FOR OUR NEXT
ILLUSTRATED CATALOG
& PRICES REALIZED
SEND
\$15.00 (domestic)
\$20.00 (overseas)

Next three catalogs are available
for \$30.00 (Domestic)
and \$40.00 (Overseas)

Ingrid O'Neil

Sports & Olympic Memorabilia
P.O. Box 60310
Colorado Springs, CO 80960-0310 USA

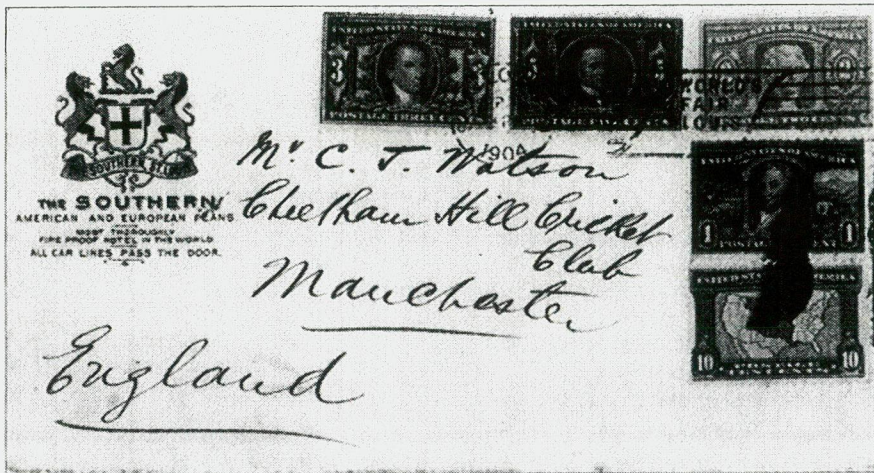
Tel: (719) 473-1538
Fax: (719) 477-0768
Email memorabilia@ioneil.com

Visit our website at www.ioneil.com

THE IIIrd OLYMPIAD - 1904, ST. LOUIS, MISSOURI

Vic Manikian

figure 1



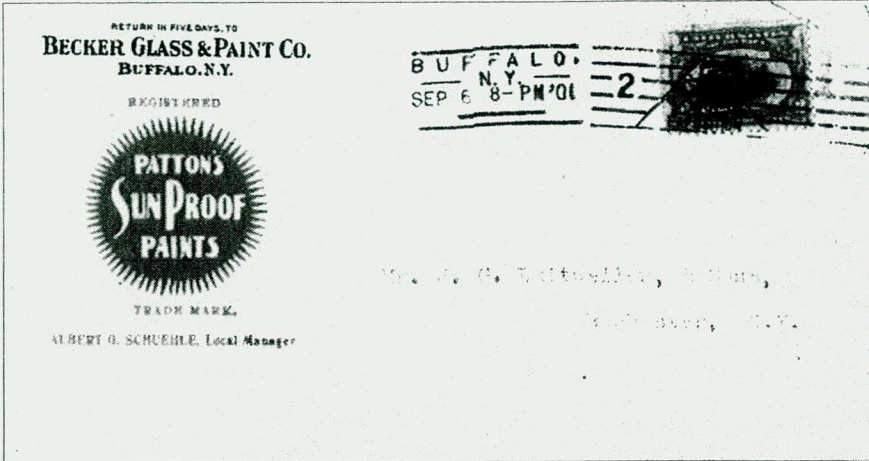
According to Pierre de Coubertin's memoirs, it was understood at the Paris Congress of 1894, that following Greece and France the IIIrd olympiad would be awarded to a city in the United States. Chicago was first in line to accept the hosting of the Games. President of the University of Chicago, Dr. Harper and a group of enthusiastic businessmen approached the French Council to convey their eagerness to support the Games. Coubertin was pleased with the great enthusiasm of Dr. Harper and the idea to have the Games in centrally located Chicago. However, J. E. Sullivan, the American Representative of the Games in a newspaper publication, stated that the decision of the host city was not decided. The C.I.O. did not want to hear these discussions and on May 21, 1901 the assembly meeting in Paris unanimously accepted Chicago as the site of the 1904 Games. Coubertin then wrote to the U.S. President William McKinley to inform him that historically it would be necessary for him to be the honorary head of the Games and also to proclaim the opening of the Olympic Games. However, Mr McKinley was assassinated in September of 1901 and this task was automatically passed on to the Vice President Theodore Roosevelt.

Assassination of President McKinley

The 6th day of September, 1901 was unseasonably hot at the World's Fair in Buffalo, New York, where many people had gathered to catch a glimpse of the President of the United States, William McKinley. {figure 2}.

A dense crowd surrounded the entrance to the Temple of Music, where the President was holding a public reception. Police had roped off an aisle for people who wished to wait in line for an opportunity to shake hands with the President.

figure 2.



At the edge of the crowd, far from the start of the reception line, a girl with long blonde hair begged her mother to take her to meet the President.

The girl's name was Myrtle Ledger. Twelve years old, she was wearing her best dress, which was yellow and white. Her mother told Myrtle that it would not be safe for them to force their way into the dense, milling crowd.

A young man, who was standing nearby, overheard the discussion between Myrtle and her mother. He volunteered to help them press through the crowd to reach the reception line. After their agreement the stranger swung Myrtle up on one shoulder and, with her mother following behind, they made their way to the the receiving line. The man deposited Myrtle in the line, then he left. Myrtle never saw him again.

Myrtle and her mother walked past the policemen in the roped aisle and entered the Temple of Music. Inside the building, Myrtle's mother moved away from the line and stood where she could watch the President shaking hands with one person after another.

As Myrtle alone, moved closer to the President, she saw that he looked like his pictures in the newspapers - the big head, the bushy eyebrows and deep-set eyes. When Myrtle finally stood in front of McKinley, she found herself staring at the red carnation in the President's lapel. Myrtle knew that McKinley regarded the red carnation as his good luck flower, and that he always wore one. She knew that at White House receptions McKinley often awarded his carnation to some deserving child in the audience.

The President offered his hand. Timidly rising on tiptoe, Myrtle put her hand in his. The President smiled benevolently. He then bent forward and asked her name.

"Myrtle," she said.

"In that case," McKinley replied, removing the red carnation from his lapel, "I must give this flower to another little flower." He handed it to her, and when she took it, he patted her on the top of her head. Myrtle made a curtsy and moved away.

Her mother joined her and they exited the Temple of Music by another door, opposite the side of the building they had entered.

Suddenly they heard a great commotion behind them. People were shouting, and Myrtle could tell that something was wrong. Myrtle's mother hurried with her daughter toward the fairground exit. As they were leaving the grounds a megaphone announced that the President had been shot.

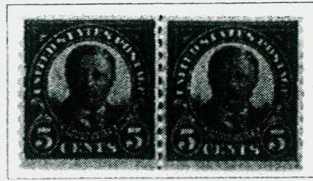
Myrtle and her mother went to the railroad station and returned to their home in Springbrook, New York, where Myrtle placed McKinley's red carnation in a glass of water. They learned the next day from the newspaper that the attacker was an anarchist named Leon Czolgosz. He had approached the President in the reception line a few steps behind Myrtle. Because of the heat the men in the line held handkerchiefs in their hand to wipe off perspiration. Czolgosz had concealed his revolver under a handkerchief.

When the anarchist reached the President, he had fired two shots. Before he could fire a third shot, Czolgosz was wrestled to the ground by a Negro man who had been waiting to shake hands with McKinley. The wounded President had been rushed in an ambulance to the Exposition Hospital where an emergency operation had been performed to locate the bullets fired at him. The doctors found the first bullet to hit the Chief Executive had bounced off his breastbone, doing no harm. The second bullet was a more serious matter. It had ploughed into McKinley's abdomen, and into his stomach. Although the surgeons made a diligent search for it, it could not be found. The operating team had irrigated the wound, sutured up the holes and closed the incision. The bullet remained inside the President.

Optimistic reports were released for a week about the President's medical progress. Physicians predicted a full recovery. But ultimately gangrene developed in the President's abdominal wound, dooming him. He died at 2:15 am. on the morning of September 14th., 1901. Vice President Theodore Roosevelt was called back to Buffalo from an Appalachian mountain climbing expedition to take the Oath of Office as the nation's 26th. President.

Meanwhile, in the nearby town of Springbrook, the child with long blonde hair, removed McKinley's red carnation from its glass of water. The flower had survived approximately as long as the President did after the shooting - a little over a week. Now the good luck flower was dead, like the man who had given it to her.

figure 3



President McKinley proclaimed the St. Louis Fair by it's 1st. Ceremony in September 1901. His assassination in the same year put Roosevelt in the White House.

President Theodore Roosevelt persuaded the I.O.C. to move the Games from Chicago to St. Louis as part of the Louisiana Purchase Exposition.

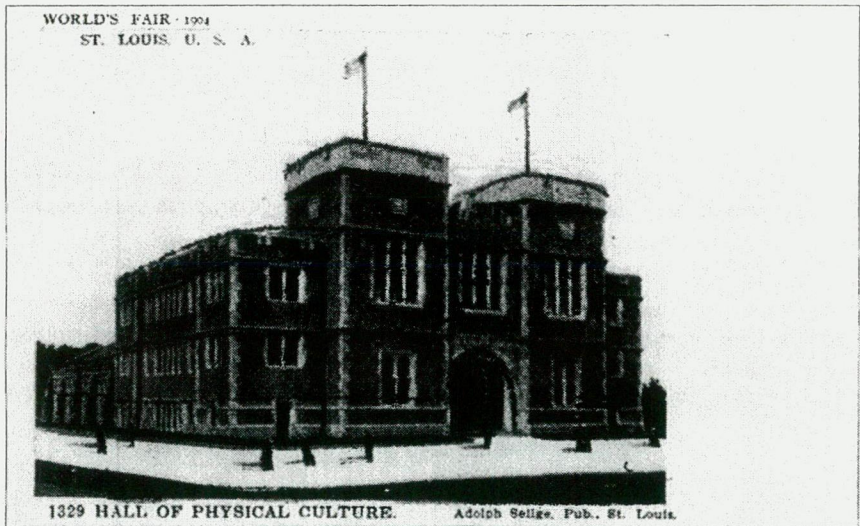


Baron de Coubertin was disappointed with the arrangements and did not attend the Games.

I.O.C. member Dr. Willibald Gebhardt travelled to the United States to represent de Coubertin.

St. Louis World's Fair and the Olympics Site

St. Louis was selected as the city of the Louisiana Purchase Exposition to commemorate the 100th anniversary of the Louisiana Purchase. In the beginning, the idea for a world's Fair in St. Louis was very modest. But after second thoughts the St. Louis city fathers, the press and even some officials in Washington became enthusiastic about the Fair, for this was the logical place to hold a World's Fair to commemorate the 100th anniversary of the Louisiana Purchase. St. Louis had been the seat of the French government of the Territory. It had also been the actual site of the transfer of the upper Louisiana Territory during the period of President Jefferson, who had said that the Louisiana Purchase was second in influence and importance only to the Declaration of Independence, {figure 3}.



The Physical Culture Building. Headquarters of the Olympic Organising Committee for the IIIrd Olympiad.

Chicago was originally selected by the Olympic Committee as the host city, while St. Louis had been selected as the site of the Louisiana Purchase Exposition of 1904. The Fair organisers asked that the Olympics be shifted to St. Louis to avoid a conflict between the two events. To resolve this dispute eventually de Coubertin requested the arbitration of President Theodore Roosevelt, who decided in favour of St. Louis to host both events. Once again the Olympic Games were assigned to the role of a World's Fair participant {figure 3a}. Unfortunately for the Olympic movement, the organisers of the Games proved even more incompetent than the Paris organisers in 1900. As a result many countries decided not to participate or sent only token representatives. The cost of trans-Atlantic travel was another factor in reducing the Games to a U.S. championship competition. Even Baron de Coubertin did not attend the Games.

However, I.O.C. member Dr. Willibald Gebhardt travelled to the United States to convey de Coubertin's best wishes to the organisers of the Games, {figure 3}.

SEE OUR EXHIBIT AT THE GREATEST EXPOSITION THE WORLD HAS EVER KNOWN

REMARKABLE FACTS ABOUT THE UNIVERSAL EXPOSITION ST. LOUIS, U. S. A. 1904

Life, Color, Motion, Operating Exhibits, to Characterize the Great Exhibit Palaces.

<p>Opens April 30th. Closes December 1st. Grounds cover 1,200 acres. Forty-four states participate. Thirty foreign countries exhibit. Four miles of aisles in Agriculture bldg. Model Indian school: one hundred pupils. Complete assemblage of the world's races. Athletic contests—all nations and races. Revival Olympic games of Ancient Greece. Primitive Mexican copper mine camp. The widest boiler plate ever rolled. Full sized yacht, completely rigged. Manufacture of nitrogen from the air. Wireless telephone stations in operation. A practical shoe factory in operation. Gum cutting, grinding and polishing. Model schools for blind and deaf. Mineral Gulch, 12 acres in extent. Queen Victoria's Jubilee presents. Philippine exhibits cost \$1,000,000. Large gas engine, 1,000 horse power. Decorative sculpture cost \$200,000. Rainbow Gardens amid the cascades. Aluminum lamp exhibits in prices. Large organs, 160 stops, 10,000 pipes. Full sized model U. S. warship. Local farm exhibits by U. S. Gov't. Indian exhibit covers 40 acres. Exposition costs \$60,000,000. Special corn exhibits cost \$200,000. Rose garden ten acres in area. 12-monthly exhibit of assessable flowers. Tobacco exhibit covers over half an acre.</p>	<p>One acre conservatory, rare flowers, plants. Floral clock, minute hand 1,200 lbs. Cafe on balcony in Horticultural building. Assembly hall seats 1,200. Agriculture bldg. Clock 144 1/2 feet across, largest on earth. Cotton exhibit one-third acre, 60 ft. high. Sugar exhibit, every phase, cane to caramel. Wool and cheese exhibit over an acre. Four acres of agricultural implements. Pure food exhibit covers two acres. Native Alaska buildings, real log-cabin poles. Alms houses and Baber's, Japan absentees. Ancient Mexican City of Mitla reproduced. Historical records of Louisiana Territory. Typical frontier trading post reproduced. Comparative measurements of race types. Stadium, seating capacity 2,000 persons. Meeting of National Rowing Regatta. Great display in gymnastics trophy room. Important lectures on physical training. Iron statue of Vulcan 85 feet high. Turquoise mine in actual operation. A typical Pennsylvania coal breaker. Coal mines of coal mines and coal faces. Special collection of gems and rare metals. To operating lighthouses and steam pipes. Outside forestry exhibits cover 15 acres. Outside live game exhibits, 30 acres. As laboratory and sporting tournament. Projected terminal improvements in N. Y. Historical exhibit of N. & O. Railroad. Oldest ticket office in Transportation bldg. Speech transmitted via electric light rays.</p>	<p>Edison's personal exhibit of inventions. Imitation diamond factory in operation. Factory where paper boxes are made. Regular hat factory in operation. Factory for making pens of all kinds. Display of jewelry valued at \$10,000,000. Ice Plant, 20 tons capacity daily. Special pavilion for exhibitors. Louisiana history told in flowers. Large silver magnet, weight ten tons. Variable engine of 1,000 horse-power. For athletic events, \$100,000. U. S. Fisheries building, 100 feet square. Live stock, 27 acres, \$50,000. Art pottery works in operation. Jack Moran's famous flag coach. Wireless telegraph station in operation. 1 1/2 miles in growing crops, 4 acres. Working display of U. S. big guns. Liberty Bell in Pennsylvania building. Ceremony of America in forestry exhibit. Model Creamery in Agriculture bldg. Grave of John Hancock in better. Face of mine in Mining Gulch. Two 100 years old from North Carolina. Oldest locomotive at Fall speed. Locomotive runs throughout season. Automobile speeding contest. Cheese weighing two tons. Parillon built entirely of peanuts. Oldest hot cups 200 feet long. Whole 20 feet long, Denver machine. Modern printing establishment, running.</p>
---	--	--

A Fifty Million Dollar Centennial of Progress

Unparalleled Beauty of Palaces and Grounds

Free Information Service for accommodation of visitors, conducted by the Exposition

Greatest Area of Rare Exhibits of the Art and Industry of Mankind ever Assembled

figure 3a.

Complete assemblage of the world's races.
Athletic contests—all nations and races.
Revival Olympic games of Ancient Greece.
Primitive Mexican copper mine camp.
The widest boiler plate ever rolled.

Olympic Games, a participant of the St. Louis World's Fair.

More than 680 athletes from twelve nations competed, but the vast majority were Americans. Irishman Thomas Kiely competing under the British Union Flag, won the combined events, the 10 events competed however were different from today's decathlon. At this point I would like to draw attention to the letter in {figure 1}, with a full set of Louisiana Purchase stamps, mailed during the Games. Mr C.T. Watson was the addressee at Cheetham Hill Cricket Club in Manchester. Mr John Crowther, Auction Manager of the S.O.C. who lives in Manchester, helped through several avenues in trying to trace the recipient of the letter without any success. John indicates that Cheetham Hill Cricket Club is one of the oldest Cricket Clubs in the Manchester area and over the years has had a lot of success in the local amateur leagues. They still have quite a thriving membership and in addition have a tennis section and an active lawn bowls section (John is one of the active bowlers in the club). Apparently the Secretary of the club died recently and the old records were put onto a bonfire. It would seem that Mr Watson would have been an official of the club, otherwise the letter would have been addressed to him at his home address. That is all we can say on this interesting overfranked letter in figure 1.

Articles on the 1904 Olympic events by Messrs. Sherwin Podolsky and Mark Maestroni in the March-April 1991 Journal of Sports Philately provide great details on all the events. There is an interesting story about the Marathon. It was hot that day in St. Louis and the Olympic course was about 26 miles long and very dusty. Beautiful Alice Roosevelt, daughter of President Theodore Roosevelt, was at the stadium to present a bouquet of red roses as well as a gold medal to the winner. As the winner loped in, she stepped down from the platform and started a pretty little speech, but evidence was produced that the winner (Fred Lorz) had gotten a ride along the way. Miss Roosevelt then took the roses back and waited until the second runner and the real winner (Thomas Hicks) came in.

Philatelic Approach

The Games of the IIIrd Olympiad were held in St. Louis as part of the 1904 Louisiana Purchase Exposition. No stamps were issued for the Olympic Games, however a set of commemorative stamps were issued to publicise the World's Fair which was also hosting the Games, {figure 3a}. The details of the Louisiana Purchase commemorative issue of 1904 are provided in the Torch Bearer issue of May 1997, (offered for reference). The postal markings of the Louisiana Purchase Exhibition provide a rich variety of cancellations, none of which bear the word Olympic. They refer exclusively to the commercial side of the Universal Exposition.

As a result of collectors showing a special interest in the postal markings of Olympic Games, and for this celebration of the IIIrd Olympiad, the postmarks of the St. Louis World's Fair, the following illustrations are provided for reference. Most of these come from ex. William Bomar's collection of U.S. exposition postal history, on which he based two comprehensive books. Starting in the late 1950's Bomar began to keep a record of each U.S. exposition cancel that he came across. The 1904 St. Louis Louisiana Purchase Exposition was included in his research. The catalogue numbers provided in the descriptions of the illustrations {figures 4-37}, that follow, are taken from the Second Edition of his definitive catalogue: "Postal Markings of the United States Expositions".

The different postal markings follow:

{figure 4}. Government postcard (ST. LO4-01) with circular steel die handstamp inscribed ST. LOUIS, MO. / EXPOSITION STA., with the numeral '1' in the canceller. A rather scarce marking. Approximately 50 specimens are known. The postcard provides 6 strikes, on a complete set of exposition commemoratives, each value with one strike and an additional strike on the 1c. government postcard. Known usage between May 2nd, 1904 and January 30th, 1905.

{figure 5}. Government postcard similar to figure 4, with 5 strikes on a full set of 5 exposition commemoratives, dated Aug 23, 1904.

{figure 6}. Government postcard, similar to figure 4, except that the oval canceller contains the numeral '2', (ST. LO4-02). Over 100 specimens are known. The post-card provides a complete set of exposition commemoratives, registered to Germany complete with registry label and (ST. LO-08A) registry marking with rubber hand- stamp reading REGISTERED / SEP 8 1904 / EXPOSITION STATION / ST. LOUIS, Mo.,

Approximately 20 specimens of this marking are known, three being on full sets of the Louisiana Purchase commemoratives.

{figure 7} . Backside of envelope with a similar registration handstamp as figure 6, dated SEP 30, illustrated advertisement of the Falstaff Building with Ferris Wheel.

{figure 8} . Envelope with Railroad Post Office (R.P.O.) hand cancel. The barred oval canceller contains 'R.M.S.' in the centre. Quantity of the ST. LOUIS & TEXARK. / R.P.O. 1903, not known. The illustrated Exposition advertising envelope shows the Manufacturers Building.

{figure 9} . Picture postcard (ST. LO4-04A) with a seven straight line International Machine Canceller with the following text replacing most of the centre line WORLD'S FAIR STA. there is a die space which contains the letter 'D'. The circular dater reads ST. LOUIS, MO. Seen used in 1903 only. Over 30 specimens known. Known usage between March 13th, 1903 and October 28th, 1903.

{figure 10} . Envelope with similar canceller as figure 9 except the number '2' replacing part of the middle line and letter 'C' in the lower die space. The cover illustrated has a Louisiana Purchase Exposition advertisement: Two women ("Columbia" and "St. Louis") holding a picture of the city. Quantity not known.

{figure 11} . Picture postcard (ST. LO4-05) with a seven straight line canceller and EXPOSITION STA. and letter 'D' replacing lines. Well over 2000 impressions of this cancel are known with most of them used in September, October and November 1904. The postcard bears a blue circular handstamp COMPLIMENTS OF / National Commission / - OF THE - / Argentine Republic, / - AT THE - / St. Louis Exposition 1904

{figure 12} . Picture postcard (ST. LO4-05) and (ST. LO4-01) on complete set of exposition commemorative stamps, mailed to Germany.

{figure 13} . Picture postcard (ST. LO4-05A) similar to figure 11 except narrow spacing between 'ST' and 'L'. Known usage between July 1st, 1904 and December 1st, 1904.

{figure 14} . Letter to Austria with 5c. exposition commemorative (ST. LO4-05B) similar to figure 11 with wide spacing between 'ST' and 'L'. Known usage between May 17th, 1904 and December 1st, 1904.

{figure 15} . Envelope from American Metal Edge Box Co. / 12-A: MANUFACTURERS BLDG. / LOUISIANA PURCHASE EXPOSITION / ST. LOUIS, MO. (ST. LO4-06) similar to figure 11 except the canceller reads EXPOSITION STATION with narrow spacing between 'ST' and 'L' of ST. LOUIS in the circular dater. Letter 'C' in the die space. Approximately 160 specimens of this cancel have been recorded.

{figure 16} . Envelope with rubber handstamp inscribed in four lines in capital letters GENERAL DELIVERY / JUL 30 1904 / EXPOSITION STATION, / ST. LOUIS, MO. (ST. LO4-9) as receiving mark, backside of cover to St. Louis. A rare marking with 16 copies recorded. Known usage May 15th, 1904 - November, 1904.

{figure 17}. Barry machine cancel with advertising slogan on prestamped envelope (ST. LO4-11). The duplex cancel with a rectangular postmark of Jan 5, 1900 and an oval slogan canceller publicising 1903 as the year of the Exposition (original plan). 'M' of 'MO' left of 'L' of 'LOUIS'. 'O' of 'MO' close to 'O' of 'LOUIS'. Quantity of this marking not known.

{figure 18}. Barry machine cancel similar to figure 17 on prestamped envelope (ST. LO4-12). 'M' of 'MO' partially under 'L' of 'LOUIS'. Quantity of this marking not known.

{figure 19}. Barry machine cancel similar to figure 17 on cover with illustrated advertisement 'Pig Brand' stout and ale bottles (ST. LO4-13). 'M' of 'MO' left of 'L' of 'LOUIS'. 'O' of 'MO' between 'L' and 'O' of 'LOUIS'. Quantity of this marking not known.

{figure 20}. Barry machine cancel with advertising slogan on prestamped envelope (ST. LO4-14). The duplex cancel with an oval postmark and an oval slogan canceller with 1903 the original date of the Exposition. 'ST' wide, period {full stop} in middle. Known usage between February 26th and April 15th, 1900. Quantity of this marking not known.

{figure 21}. Prestamped envelope (ST. LO4-15) similar to figure 20. 'ST' wide, period {full stop} close to 'T'. Known usage between March 28th and April 23rd, 1900. Quantity of this marking is not known.

{figure 22}. Envelope (ST. LO4-16) similar to figure 21. 'S' in 'ST' slopes down. Known usage between January 2nd and January 15th, 1900. Quantity of this marking is not known.

{figure 23}. International machine cancel with advertising slogan on envelope (ST. LO4-19A/1). The dater ST. LOUIS, MO. was used with a canceller of seven horizontal lines with a numeral 1 through to 8, in a die space at the left of the slogan, to publicise 1903 as the year of the Exposition. This canceller was extensively used. No one number appears to be scarcer than any other. Earliest use is December 1st, 1901, latest use is June 2nd, 1902. These machine markings are very common.

{figure 24}. Mourning notice envelope (ST. LO4-19A/2) similar to figure 23, except with a numeral '2'.

{figure 25}. Envelope with illustrated advertisement (ST. LO4-19A/4) similar to figure 23, except with a numeral '4'.

{figure 26}. Envelope with advertisement (ST. LO4-19A/8) similar to figure 23, except with a numeral '8'.

{figure 27}. International machine cancel with advertising slogan on envelope (ST. LO4-19B/1) similar to figure 23 except the date '1903' has been removed from the bottom line of the slogan. Continues to be seen with a numeral (1 through to 8), at the left of the slogan scroll. The numeral 7 was reserved for cancelling postcards and postal cards (figure 31). In mid 1902 the Exposition management determined that the grounds and buildings would not be ready for opening in 1903, with the result that the

date 1903 was removed from the slogan on the eight machines in use at the Main Post Office. Earliest recorded date is July 2nd, 1902 and the latest use is November 25th, 1904. These machine markings are common.

{figure 28}. Envelope (ST. LO4-19B/3) similar to figure 27, except with a numeral '3'. The illustrated advertisement is for the Mines and Metallurgy Building.

{figure 29}. Envelope to Germany (ST. LO4-19B/4) similar to figure 27, except with a numeral '4'. The illustrated advertisement is for the Liberal Arts Building.

{figure 30}. Envelope (ST. LO4-19B/5) similar to figure 27 except with a numeral '5'. The illustrated Exposition advertisement has an oval portrait of 'Transfer Louisiana Territory, 1803.

{figure 31}. Government postcard (ST. LO4-19B/7) similar to figure 27, except with a numeral '7'. Machine '7' was reserved for cancelling postcards and postal cards.

{figure 32}. Envelope (ST. LO4-19B/8) similar to figure 27 except with a numeral '8'. The illustrated Exposition advertisement has an oval portrait of 'Founding of St. Louis.'

{figure 33}. Envelope to Austria via S/S Lucania (ST. LO4-19B/8) similar to figure 27 except with a numeral '8'.

{figure 34}. Envelope (ST. LO4-19B/8) similar to figure 27 except with a numeral '8'. The illustrated Exposition advertisement WHEN YOU VISIT THE WORLD'S FAIR / GO TO / THE ONLY HOTEL WITHIN THE GROUNDS / THE "INSIDE INN" / EUROPEAN PLAN \$1.50 UP / AMERICAN PLAN \$3.00 UP / RATES INCLUDE ADMISSION TO GROUNDS.

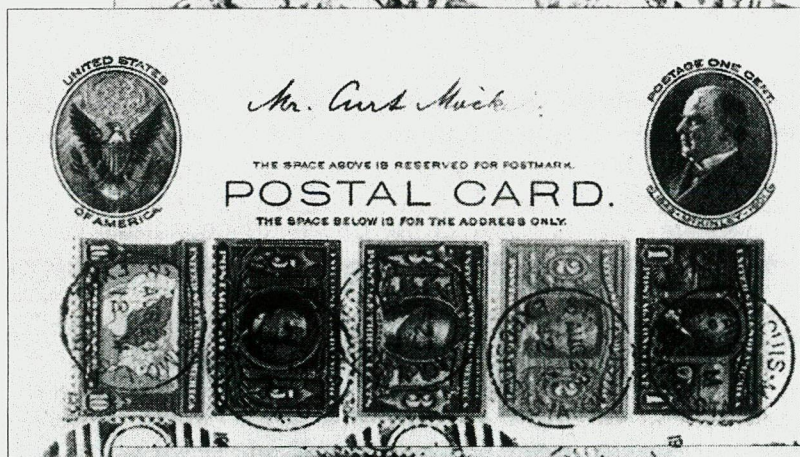
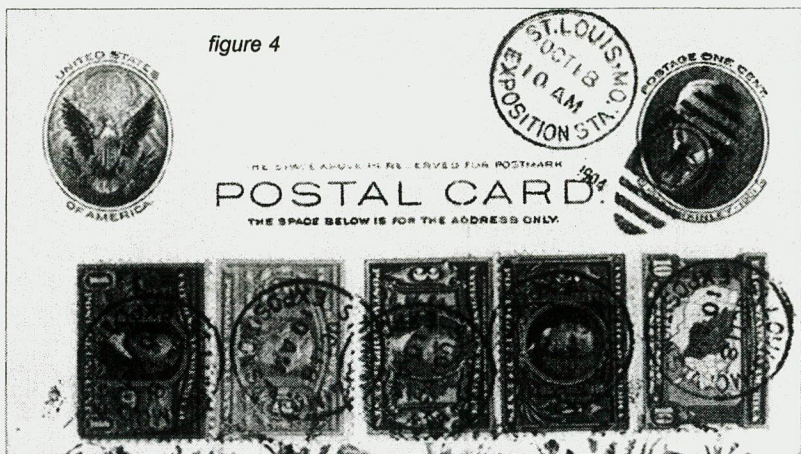
{figure 35}. Envelope (ST. LO4-19B/8) similar to figure 27 except with a numeral '8'. The illustrated Exposition advertisement 'WORLD'S FAIR ST. LOUIS 1903'.

{figure 36}. Envelope (ST. LO4-20) similar to figure 27 cancels, except the town dater is spelled out as SAINT LOUIS and always with machine numeral '3' at the left of the slogan scroll. Known usage between January 13th and November 2nd, 1904. This machine marking is common.

{figure 37}. Envelope (ST. LO4-20) similar to figure 36. The illustrated advertising cover shows the Administration Building.

References:

1. Birk, Dorothy Daniels, "The World Came to St. Louis, A Visit to the 1904 World's Fair." The Bethany Press, St Louis, Mo. 1979.
2. Storer, Doug "Woman Recalls Getting McKinley's Carnation." Buffalo Express, September 13, 1971.
3. Sports Philatelists International, *Journal of Sports Philately*, March - April 1991.
4. Society of Olympic Collectors, *Torch Bearer*, May 1997.
5. Bomar, William J. "Postal Markings of U.S. Expositions", Second Edition. Editor and Publisher BJB Philatelics, Tampa, FL 1996.
6. Coubertin, Pierre de, "Mémoires Olympique", Réédition 1989, Comité International Olympique, Lausanne.



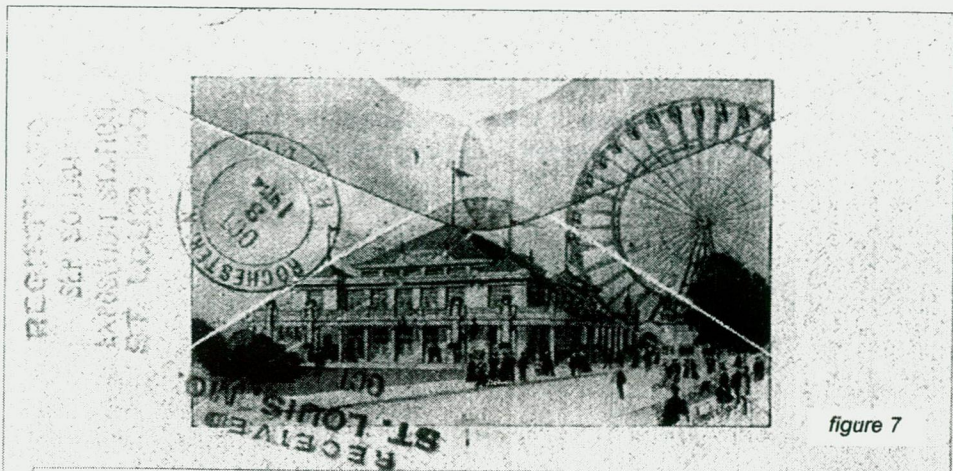


figure 7

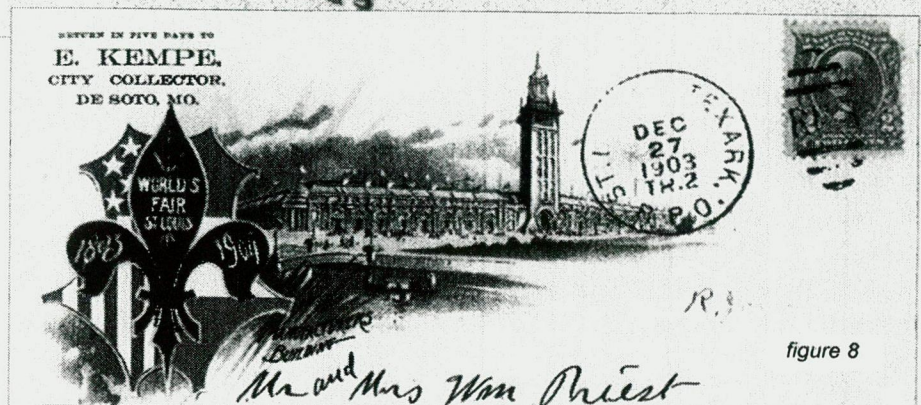


figure 8

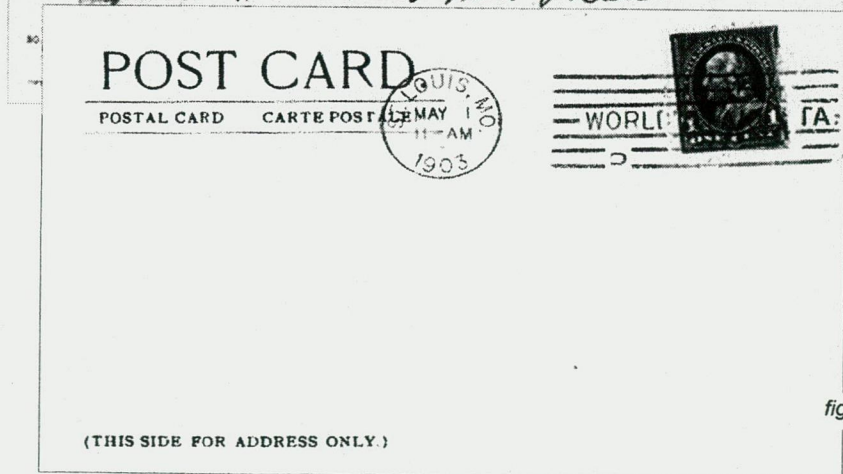


figure 9

RETURN IN TEN DAYS TO

Witte Hardware Co.

ST. LOUIS, MO.



Cleveland Stone Co.
Cleveland,
Ohio.

figure 10



Tarjeta postal
Carta postale
Postale universelle.



Mrs. W. S. Ward.
6423 Spruce St.

figure 11

P



6423 Spruce St.



figure 12

THIS SIDE FOR THE ADDRESS.

POST CARD
THE ADDRESS ONLY TO BE WRITTEN ON THIS SIDE



Miss Lelia Hall

figure 13

Wohlg.

Johann Ed. Musil

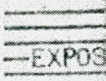


figure 14

Wien 1/2

*Diessaufgasse 25
Austria*

Europe

American Metal Edge Box Co.
12-A: MANUFACTURES BLDG.
LOUISIANA PURCHASE EXPOSITION
St. Louis, Mo.



*W. H. Gavitt Medical Co.
Topeka
Kansas*

figure 15

figure 16

EXHIBITION STATION,
ST. LOUIS, MO.



After 5 days, return to
MERCANTS EXCHANGE,
ST. LOUIS, MO.

ST. LOUIS,
MO.
JAN 5 5-04 PM '00

1



Mr Martin Chapman
3001 Olive St
City

figure 17

After 10 days, return to
A. F. SHAPLEIGH HARDWARE CO.,
Washington Ave. and Fourth St.,
ST. LOUIS, MO.

ST. LOUIS,
MO.
FEB 23 2-34 PM '00

1



Peck, Stowe & Wilcox,
Southington, Conn.

figure 18

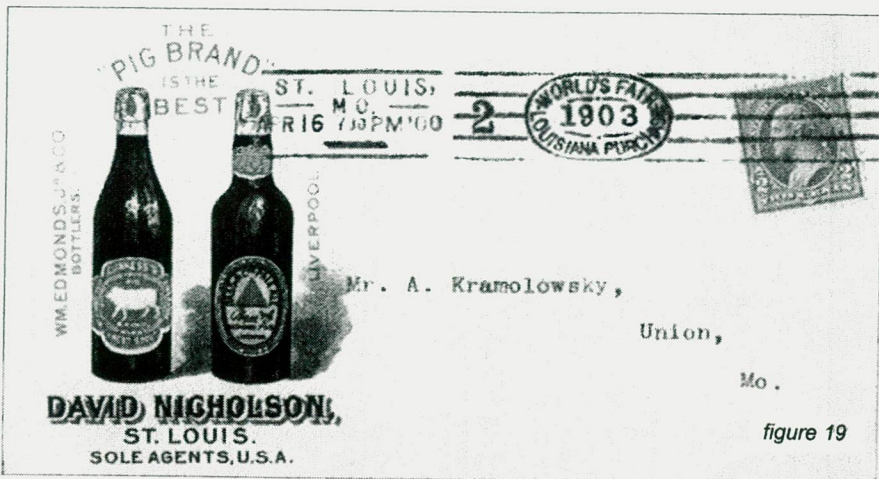


figure 19

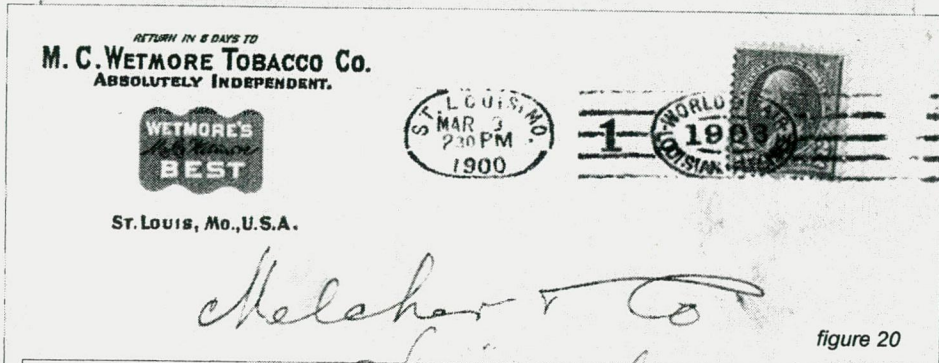


figure 20



figure 21



figure 22

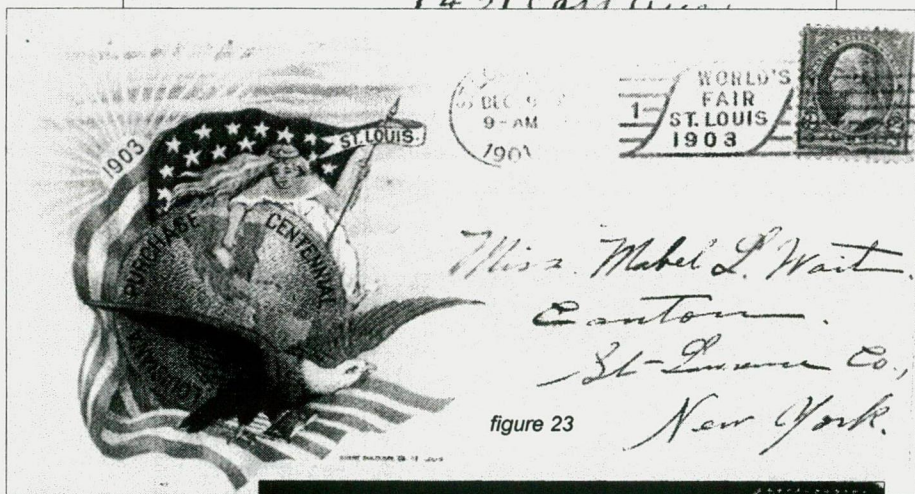


figure 23

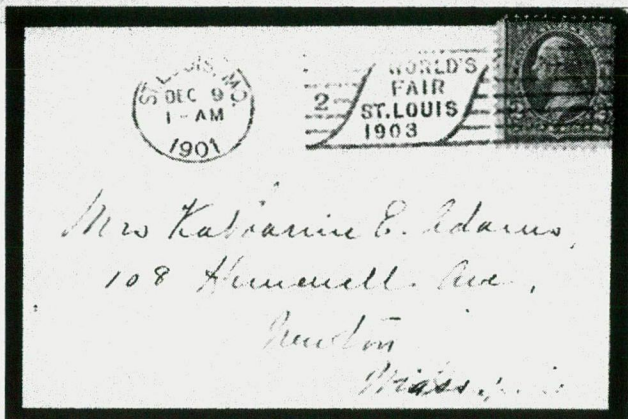
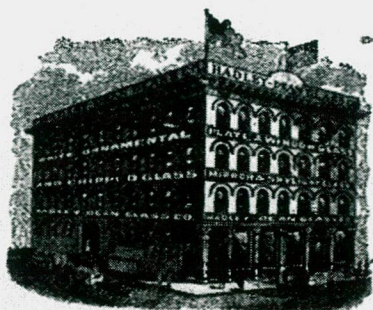


figure 24

PLATE GLASS.



HADLEY-DEAN GLASS CO.,
ST. LOUIS, MO.



WORLD
FAIR
ST. LOUIS
1903



figure 25

G. D. Brown

Samuelson

RETURN, IN FIVE DAYS, TO

V. Scalzo Fruit Co.

Receivers and
Distributors of
All Kinds of

**FRUITS and
PRODUCE.**

900 NORTH THIRD ST., ST. LOUIS, MO.

figure 26

Anton Kramolowsky,

IF NOT CALLED FOR IN FIVE DAYS RETURN TO



Mr. A. Kramolowsky,

Union,

No.

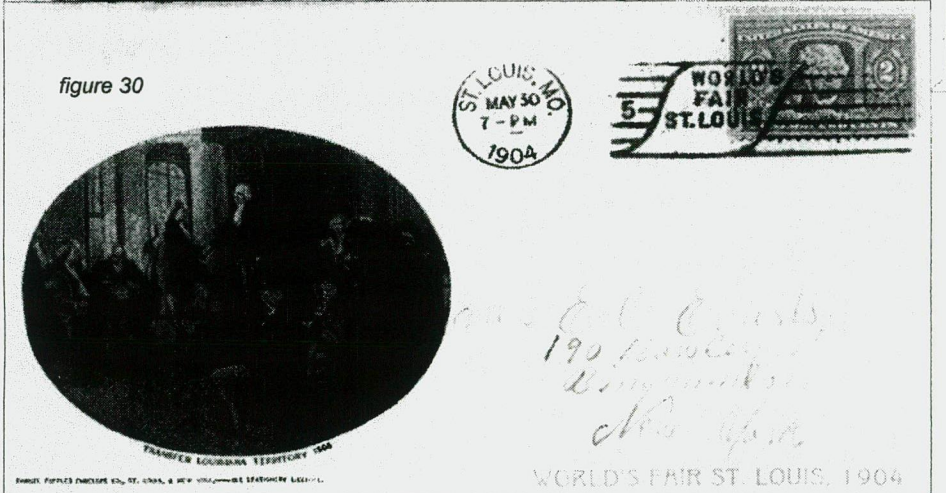
figure 27

figure 28



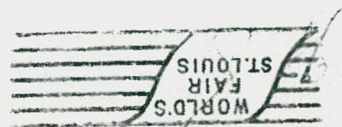
figure 29

figure 30





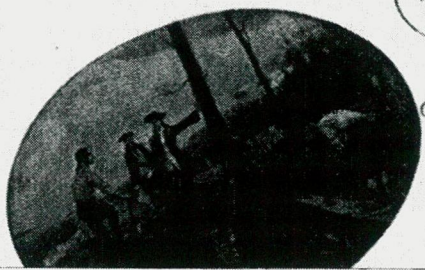
POSTAL CARD.
THE SPACE BELOW IS FOR THE ADDRESS ONLY



*Miss Cora Sam
Moran
St. Louis, Mo.*

figure 31

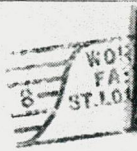
figure 32



*Miss Cora Sam
Moran,
St. Louis, Mo.*

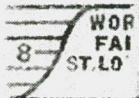
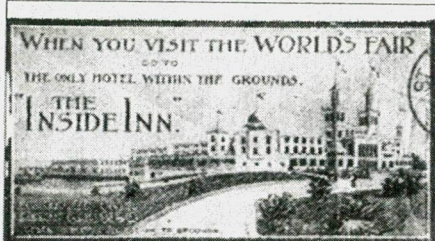
RETURN, IN THREE DAYS, TO
MERCANTILE TRUST COMPANY,
SAINT LOUIS.

per S/S Lucania.



Anglo Austrian Bank,
Vienna,
Austria.

figure 33



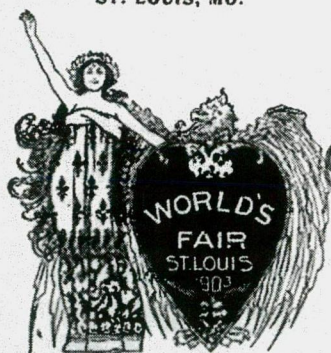
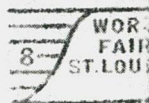
Miss Anna M. Baldwin

figure 34

RETURN IN TEN DAYS, TO

Witte Hardware Co.

ST. LOUIS, MO.



*American Cutlery Co.
173 Mather St.
Chicago*

figure 35

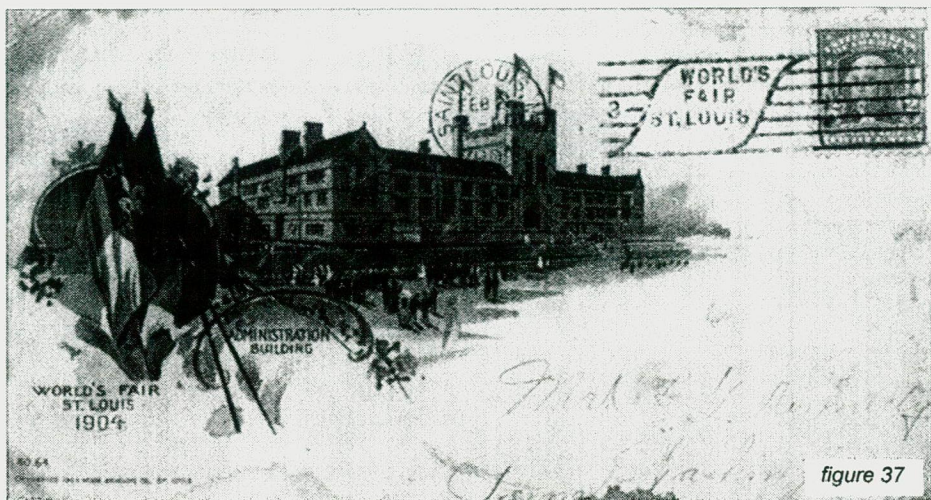
RETURN IN FIVE DAYS TO

C. H. MEKEEL STAMP & PUBLISHING CO.

ST. LOUIS, MO., U. S. A.



WM. H. FABER
33 GEORGE ST.
CHARLESTON S. C.



THE WENLOCK OLYMPIAN GAMES 7/8/9 JULY 2000.

John Crowther

Those of you who read the article in volume 17, issue 2 of Torch Bearer will know that the year 2000 sees the 150th Anniversary of the first Games held in Much Wenlock in 1850 and also the first time S.O.C. have sponsored one of the events.

Saturday, 8th July.

I left home at 7.30am in order that I would arrive in good time for the Crown Green Singles Tournament which commenced at 10am. The journey took longer than anticipated due to torrential rain which continued intermittently during the rest of the day. The bowling green was saturated, but this was not the reason for my first round exit from the Mens Singles but my opponent was a better player.

In the afternoon I wandered round the town of Much Wenlock and finished up at the Guildhall, which was built during the years 1540 and 1577. this was the location of the S.O.C. display on the following day. I discovered to my horror that there were no tables on which we could stand our frames. The room had been cleared as the Town Council were hosting a reception for British Olympians during the evening. However, a visit to the adjacent museum and with the assistance of one of their staff, I was informed that sufficient tables would be available the following morning at 9am.

After dinner at the Wheatland Fox Hotel I retired to Elsie Stevenson's comfortable bungalow. Elsie is 87 years old and looks after her guests entirely on her own.

Sunday, 9th July.

At 9am I met up with Bob Wilcock and Bob and Brenda Farley who had driven up from Essex and

Worcester that morning. We erected the frames which I had brought with me from my local philatelic society, in the main room of the Guildhall. Martin Leath, another of our members, had erected a static display of the history of the early Games, and having seen that everything was in order he left for the Linden Field to complete his duties as a field events judge.

Many of the British Olympians from the previous evening had stopped overnight in Much Wenlock and we were very pleased that they paid us a visit on the Sunday morning. They were really interested in our displays which covered the whole period of the Modern Games from 1896 to Sydney 2000. Christine Earle had provided a display of archery in the Olympic Games to complement our sponsorship of the archery event.

The chief spokesman for the Olympians was John Disley, the silver medallist in the 3000 metres steeplechase at the 1952 Helsinki Games. Many fascinating stories were recounted, and we anticipate that we may have gained some new members from their ranks.

At 11.30 I went down to the bowling green to compete in the pairs event with my partner Alan Parrott who had driven up that morning with his wife Barbara. In 1997 Alan had won the singles event at his first attempt, but this year we were destined to go home empty handed, losing in the first round. Bob and Brenda were brave enough to offer their support but I noted that they were kind enough to leave the field of battle before the completion of our humiliation.

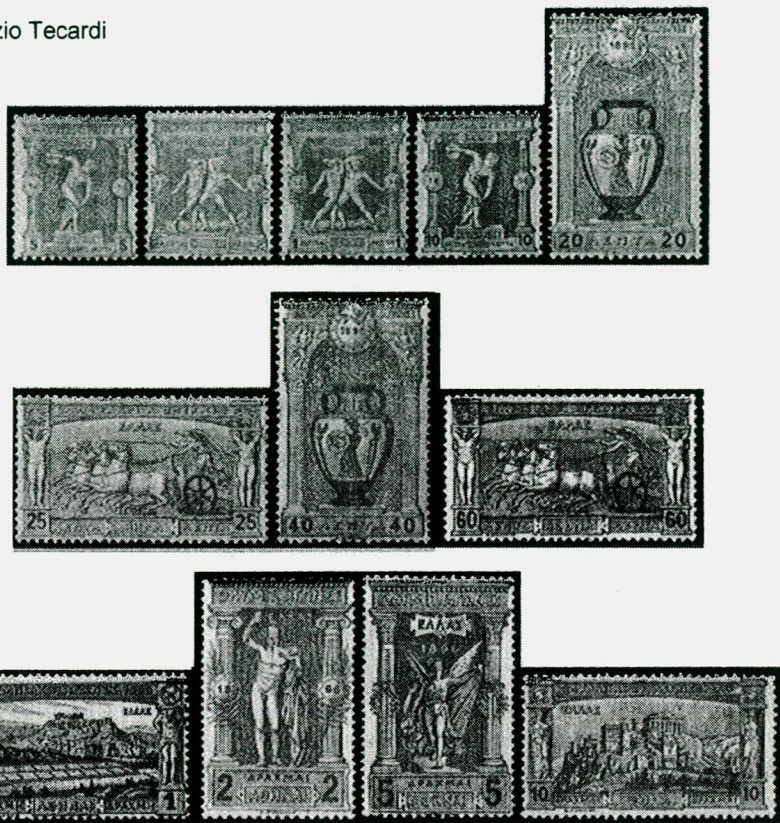
I paid a visit to the archery field and spoke with the officials who tried to educate me in the arts of toxophily. The competitors were braving a very strong wind, which is their worst enemy. I also watched some of the track and field events which were mainly for the junior athletes before returning to the Guildhall where Bob Wilcock had been holding the fort. At 4.30 we dismantled the displays, packing away the tables and frames. We were disappointed that so few of our members had visited Much Wenlock, but we felt that the exercise had been well worthwhile as an advertisement for the Society.

Our grateful thanks are due to Helen Cromarty of the Wenlock Olympian Society and Anne Downes, the Town Clerk for all their help with the display and sponsorship and we would like to think that we have cemented our relationship with our friends in Much Wenlock.



CLASSICAL OLYMPIA, Athens post office cancellations 1896-1900

Maurizio Tecardi



This article first appeared in **Vaccari Magazine** Anno XII n. 23 - may 2000, and is reprinted with their kind permission.

Vaccari s.r.l., via M. Buonarroti 46 - 41058 Vignola (MO) - Italia www.vaccari.it

In one of my previous articles, published first in the n. 27 (July - September 1998) of the "Philasport" magazine, official organ of the Italian Olympic Philatelists and Sportsmen Union, and appeared in several specialised magazines in other countries (Torch Bearer Vol. 15 page 105.), I helped to definitely prove that in 1896 only one post office existed in Athens, sited on the corner between Lykavitou Street and Stadiou Street. This office was open from 5 a.m. to 10 p.m. and carried out all possible postal operations.

These operations could be carried out by the six post office counters which had different opening times.

Counter 1. - to sell postage stamps, from 8 a.m. to 7 p.m. This counter also carried out the collection of mail from the letter-box placed inside the office. Emptying took place at hourly intervals from 5.30 a.m. to 7.30 p.m., and was followed by the cancelling and sorting of mail.

Counter 2. - to send printed matter, newspapers and books, from 6 a.m. to 6 p.m.

Counter 3. - to send registered mail, from 8 a.m. to 12 a.m. and from 2 p.m. to 6 p.m.

Counter 4. - for collection of poste restante mail, from 8 a.m. to 12 a.m. and from 2 p.m. to 6 p.m.

Counter 5. - for money orders, from 9 a.m. to 12 a.m. and from 3 p.m. to 5 p.m.

Counter 6. - for parcels, from 9 a.m. to 12 a.m. and from 3 p.m. to 5 p.m.

As I suggested in that article, not too long ago collectors and experts of Hellenic philately and postal history in general, and those specialising in classical Olympic philately in particular, were quite convinced that the numbers 1 to 8 that distinguished Athens cancellations in 1896 - and the cancellation "without number" (the one with number 9 and another one "without number" appeared some years later) - and that were to be found on the Olympic postage stamps of 1896, were used for identifying as many post offices. Having cleared up, and accepted the existence of only one post office, I think it proper to assume that those numbers indicated and distinguished the different postal services the public could make use of, and maybe, in some cases, an internal administrative use.

This interpretation of mine is supported by the study of the many historical-postal documents I have found and checked through the years.

Anyway, starting from the order used to indicate the six post office counters, it is possible to match them with the following cancellations:

- a) counter to sell postage stamps (and stamping / sorting of mail) with number 1;
- b) counter for printed matter with number 2 and, occasionally in 1896, with the cancellation "without number";
- c) counter for registered mail with number 3;
- d) counter for poste-restante with number 5 or number 6;
- e) counter for parcels with number 7;
- f) counter for money orders with numbers 8 and 9.

My theory, based also on other experts' studies, should give results with a high level of probability, and therefore should be acceptable to anyone.

Having clarified as far as possible the use of the cancellations carrying the numbers 1, 2, 3, 7 (for all of these, use "on demand" is known, at the correct time, and more commonly at a later date; for numbers 3, 7, and 6 forgeries created in the 1920's are known) and of the cancellation "without number", doubts remain about those carrying the numbers 5, 6, 8 and 9, or even more mystery surrounds cancel number 4.

About this last cancel, one of the most competent experts of Hellenic postal history, Neoklis Zafirakopoulos, indicates that it was used for registered mail addressed with Greece. Unfortunately, I do not feel able to confirm this because documentary evidence is lacking - which is odd, and difficult to explain. If this cancellation had actually been used for internal registered letters, letters and loose stamps should exist. On the contrary, I can state that the few pieces I know about, loose stamps and only one letter carrying the impression of cancellation number 4, are certainly "on demand".

As to cancellation number 5, I can state with as much certainty that from 1896 until the beginning of 1900 it was only used on mail either arriving or in transit at Athens, and thus it should not be found on Olympic stamps or indeed any other issues. Anyway, impressions from cancel number 5 would be "on demand", whether created on loose stamps, blocks or even some letters and postcards ...for collecting purposes. There is a nice episode surrounding cancellation number 5: two covers dated 4th January 1901 have the impression of this cancellation in red (not on Olympic stamps). This cancellation had been used to celebrate entering the new 20th century!

As to number 6, I have seen it used twice, in 1896 and 1897, on arrival or transit, and only once as the canceller of Olympic stamps in October 1899. On loose stamps or on larger blocks, it is used "on demand" especially with the date of issue of the Olympic series, 25th March, 1896, and with the date stamp set at 10 a.m. or at 7 p.m. A forgery of this cancel was created in the 1920's dated as 22nd April 1896 at 10 a.m.






What of number 8? It seems it had been used, at least until 1900, for stamping internal money orders; it did not, therefore, cancel postage stamps. From 1901 this cancellation was used to cancel stamps of the time, including the five Olympic overprinted stamps of 1896, that franked the parcel-post cards. For this cancellation, impressions "on demand" are known on Olympic stamps with the date 25th March 1896 at 8 a.m. both normal and inverted.





Of the cancellation number 9, that according to Zafirakopoulos was used on money orders addressed abroad, no impression on Olympic stamps is known up to 1900; its use until 1906 is also extremely rare. That is the reason why it has not been included in the summary table.

How are "on demand" cancellations recognised? They are almost always, not to say always, well centred and well-printed on the stamps, particularly on the Olympic ones of 1896; that is definitely in contrast to what one can expect by observing letters, postcards and loose stamps of ... certain origin! As for the use of these cancellations "on demand" for collecting purposes, I would like to bring to the attention of philatelists, exhibitors or not, that these cancellations are to be considered in the same way as forgeries, and therefore they can be collected and shown only as such.

Different uses than those indicated in the summary table are not impossible, but as confirmed by my friend Zafirakopoulos, quite improbable.

Anyway, in order to further clarify this topic, which is definitely complex and intriguing, I intend to publish in the near future a series of articles specifically dedicated to each of these cancellations, paying special attention to their use on the stamps of the 1896 Olympic issue of Greece.

Cancellation	Use 1896-1900	Notes
	<p>PRINTED MATTER (mail, newspapers books).</p>	<ul style="list-style-type: none"> - Used from 1891 to 1898; rarely used from 1896 on. - No philatelic use "on demand" is known. - A second cancel (without number but similar to the ones with numbers) started to be used from the end of 1904.
	<p>MAIL (letters and post- cards). Inland & abroad.</p>	<ul style="list-style-type: none"> - Some cases are known on printed matter (newspapers), on registered mail and on franked mail from the Organizing Committee for the 1896 Olympic Games. - Used "on demand".
	<p>PRINTED MATTER (mail, newspapers books).</p>	<ul style="list-style-type: none"> - More frequent use from 1897, as a substitution for the cancellation "without number". - Infrequent use "on demand".
	<p>REGISTERED MAIL</p>	<ul style="list-style-type: none"> - Used a lot for stamping "on demand" above all on blocks (of 6, 8, 10 postage stamps and especially with the date 25 March 1896 with varieties in the date-stamp. - It exists as a forgery with the date 24 October 1896, 8 p.m.
	<p>UNKNOWN USE (inland registered mail?) (internal administrative use?)</p>	<ul style="list-style-type: none"> - It is known used "on demand" (a few cases known), with the date 25 March 1896 - 10 a.m. and 11 a.m. - and with other dates.

Cancellation	Use 1896-1900	Notes
	<p>ARRIVAL OR TRANSIT MARK</p>	<ul style="list-style-type: none"> - Used "on demand" with the date 25 March 1896 (12 a.m. & 8 p.m.) and rarely on mail in 1896 & 1897. - Used for mail as canceller in some cases from 1901.
	<p>ARRIVAL OR TRANSIT MARK (Rarely)</p>	<ul style="list-style-type: none"> - It is not known used for mail before 1898. - Mostly used "on demand" above all on 25 March 1896 (10, 11, 12 a.m. & 7 p.m.) - It exists as a forgery with the date 22 April 1896 (10 a.m.)
	<p>PARCELS (And on the official mail of the Organising Committee for the Olympic Games).</p>	<ul style="list-style-type: none"> - Mostly used "on demand" above all on 25 March 1896 (10 & 12 a.m. & 7 p.m.) - Used on registered mail in 1900 & 1901. - It exists as a forgery with the date 12 October.
	<p>INLAND MONEY ORDERS (Without postage stamps). A similar cancel, number 9 was probably used for FOREIGN MONEY ORDERS On Olympic stamps only a few cases "of favour" are known, whereas it was generally on common mail starting from 1906.</p>	<ul style="list-style-type: none"> - Rarely used "of favour" on loose postage stamps and on letters; all those dated 25 March 1896 bear the same time (8 a.m.) - Starting from 1900/1901 it was used to cancel the postage stamps (including the Olympic ones overprinted) which franked the parcel-post cards addressed abroad.

The following pages show illustrations of regular usage



ΣΙΟΝ

περιγύροις τῶ ἀπὸ ἀποστάσεων ἄλλων καὶ ἡ ἀνάστασις τοῦ Λαζάρου, ὅτι ἐπιπέθη δι' αὐτὸν ἰατρον τῶν Ἰουδαίων καὶ ἐπίστευσεν εἰς τὸν Ἰησοῦν (Ἰωαν. 16. 11). Τὸ καταπληκτικὸν θαῦμα τοῦ Ἀποστόλου Πέτρου διεδόθη καὶ ἐν πάσῃ τῇ πόλει τῆς Ἰσπῆας, ὅτι ὁ Πέτρος ὁ κερύσσειον τὸν Χριστὸν, ὡς τὸν Θεὸν καὶ Σωτῆρα τοῦ κόσμου, διὰ τῆς βοήθειας αὐτοῦ τοῦ Θεοῦ ἐκίστησεν ἐκ τῶν νεκρῶν τὴν Ταβέθᾶ, καὶ ἐνταῦθεν πολλοὶ ἀπιστοὶ πρότερον ἐπίστευσαν καὶ ἐπίστευσαν ὑπὸ τὴν σωτήριον ἀγγελίαν τοῦ Εὐαγγελίου, ἀναμύνοντες τὰ ὑπο...

Joseph Müller
Neugasse, 66
Brün
Austria

figure 1;
blank
cancel

C. Bonno,
42, State Street,
Bridgport
nectant, U.S.A.

figure 2;
cancel 1

εγγελίου, ἀναμύνοντες



figure 3;
cancel 2

ταύτου εἴδους ἐκφανῆσαι τοῦ ἱερῆος, βεβήτως εἶναι ἀδύνατον νὰ κατορθώσῃ τοῦτο, διότι αὐτὴ εἶναι μίᾳ αἰτιολογία ἄνευ προηγουμένης προτάσεως. Ἡ ἐξήγησις κατὰ λέξιν ἔχει οὕτω.

Διότι εἰς σὲ τὸν ἐν Τριχίδι Θεόν, τὸν Πατέρα τὸν Πῶν καὶ τὸ Ἄγιον Πνεῦμα, εἰς σὲ ἰστέ...

Η Σ Ω Τ

ΕΦΗΜΕΡΙΣ ΠΟΛΙΤΙΚῆ ΦΙΛΟΛΟΓΙΑΣ

Ἐκδόσεις, Τρίτη 8 Ἀπριλίου 1936

Fig. 3
Προσδοκῆ εἰς τινὰς διδασκάλους.
Προσδοκῆ εἰς τινὰς ἐργαζομένους ἐν φροντιστηρίῳ.
Ἠρῆ γὰρ εἰς τινὰς διανοητάς

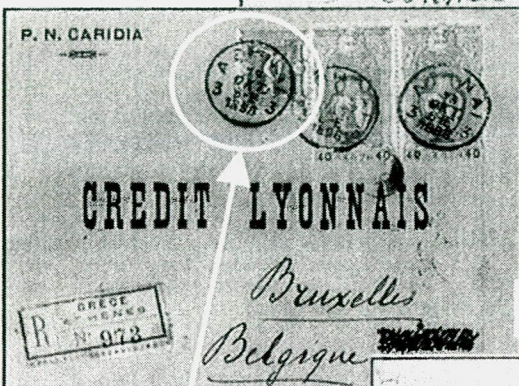
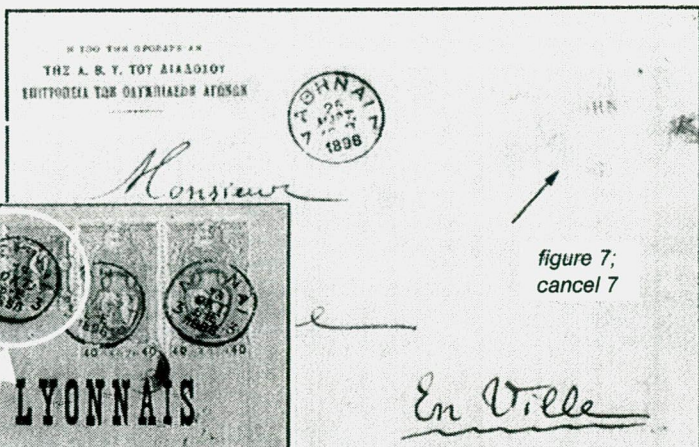


figure 4;
cancel 3

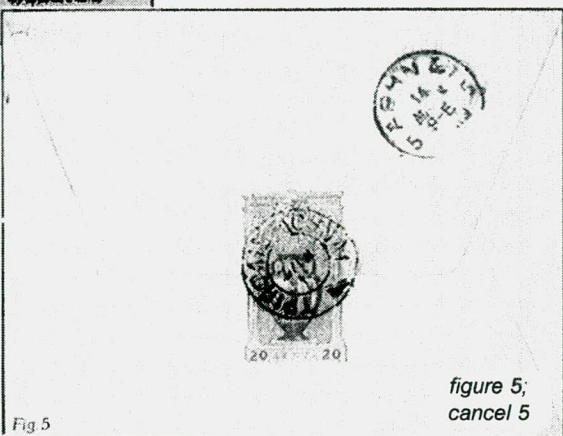


Fig 5



figure 6;
cancel 6

JOURNAL OF SPORTS PHILATELY

Two magazines have been received since the last review.

Volume 38 number 5 starts with the second part of The Berlin 2000 Meters and explains that the large number of postal meters is due in part to the Unification of Germany and in part to the change in Post Codes. The first part was printed in Volume 38 Number 3. The Delta Air Lines 2000 Olympic Sponsorship which commenced after the Nagano Games is featured in another article. There is also a tennis profile of Andre Agassi, the 1996 Olympic Champion; and Olympic Post Offices of the 1984 Los Angeles Games. This latter article will be run over several issues and covers Archery, Athletics, Baseball, Basketball, Boxing, Canoeing & Rowing, and Cycling.

Volume 38 Number 6 continues with Part 3 of The Berlin 2000 Meters; an article on VISA Olympic Advertising on Business Mail (which draws attention to the limited U.S. advertising covers for the Sydney Olympics; and the 1980 Olympic Winter Games Torch Relay at the Grave of Franklin D. Roosevelt where a special flame was lit. A non-Olympic article on an Olympic Sport covers the postmarks for the Modern Pentathlon World Championships held in Budapest last year.

Available from Margaret A. Jones, 5310 Lindenwood Avenue, St Louis, MO 63109 U.S.A.

PHILA-SPORT

Magazine of the Italian Union of Olympic and Sports Philatelists.

Number 34 Has a number of Olympic Sports featured in a non-Olympic article, including the World and European Archery Championships, and World Cup Skiing. The successful Turin 2006 Olympic Winter Games bid is illustrated with postal stationery and postcards and also features some of the material produced by the other candidature bids. The 1st Olympic Winter Games Fair which was held at Lillehammer in February is also reported on.

Available from Bruno Tassoni, Via dei Monti Tiburtini, 600, 00157 Roma, Italy.

JOURNAL OF OLYMPIC HISTORY

Magazine of the International Society of Olympic Historians.

Volume 8 number 2, commences with an article on Olympic competitors and their involvement in the Two World Wars. The article concentrates on two Australians, Claude Smeal who ran in the 1952 Helsinki Marathon and Cecil Healy the 1912 Gold Medalist swimmer. An in-depth article looks at the recent Olympic Bribery Scandal. An early account of the 1896 Games in Athens is reproduced, and going back further in time, the reason why Greeks oiled their bodies in the early Olympics is discussed. Other articles feature Caspar Whitney, an American member of the IOC; Joakim Puhk, Secretary of the Estonian Olympic Academy; and George Buff who ran in the 1900 Paris Marathon as a

professional and the 1908 London Marathon as an amateur. In the 1924 three Australian Gold Medallists came from the Sydney Village of Manley and their achievement forms another article. The most interesting article from the British point of view is on the Dilemma of the position of Artistic Sports in the Olympic Games. This long running debate is brought up to date with much thought on the performance of Jayne Torvill and Christopher Dean at Lilliehammer in 1994.

Available from Anthony Th. Bijerk, Vogelrijd 16, 8428 HJ Fochteloo, Netherlands

COLLECT IT!

A UK Collecting Magazine.

The September Issue number 39 features an article on Olympic Memorabilia entitled "Going For Gold" and is an interview with our Chairman and his wife Bob and Brenda Farley. Items from their collection are illustrated and the Society of Olympic Collectors gets a considerable amount of publicity. Interestingly the same issue features Misha the bear mascot from the Moscow Games of 1980, in an article on Russian Collectables.

Available from most High Street Newsagents including W. H. Smith at £ 2.40

**MUSEUM OF
THE YEAR**

"GOLDEN OARS"

The Games that Britons rowed

One Hundred Years of Rowing at the Olympics
An exhibition staged with the support of the British Olympic Association

Golden Oars opened on June 16th and runs to mid October,
The River & Rowing Museum, Henley-on-Thames

MEMBERSHIP OF THE SOCIETY OF OLYMPIC COLLECTORS

Membership starts on election, of which applicants will be notified, and will last for one calendar year. All back issues of the magazine for the current year will be sent to members joining during the year.

Junior members are those aged under 18 years in the year of joining, subscription rates are half of the adult rate until the 18th birthday.

All applications should be made to the Secretary.

Subscription rates for 2000 are:

U.K. £10.00; Europe, £12.00 (DM 40, \$US 25).

Outside Europe, £17.00 (DM 50. \$US 35)

Acceptable forms of payment: \$US cheques drawn in USA; Sterling, \$US, or DM currency notes; Sterling cheques.

Coubertin.com

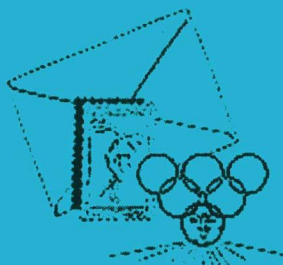
Olympic Collectors Auction

Philatelic Picture Postcards
Tickets, Programmes & Posters
Medals & Torches Pins & Badges
Literature & Ephemera Numismatic

By Olympic Collectors for Olympic Collectors

No Commission Charges for Buyers
Low Commission Charges for Vendors

Completely free auction service for a limited period
on the Internet at www.Coubertin.com



OLYMPIC-GAMES FOOTBALL (SOCCER) SPORTS



- classic till today -

stamps / blocs / souvenir-sheets / ** / * / © / ☒ / ☒ ♦ proofs ♦ epreuve
de luxe ♦ cards ♦ letters ♦ first day covers ♦ postmarks ♦
cancellations ♦ postal stationery ♦ books ♦ autographs ♦
tickets ♦ programs ♦ pins ♦ badges ♦ pressfotos ♦ coins ♦
medals and more special material

OUR STOCK HAS MORE THAN 50 000 ITEMS FROM
ATHENS OLYMPICS 1896 TO SYDNEY 2000

pricelists (8 a year with aprox. 100 pages / some illustrations)
auction catalogues (mail bidding) 4 a year (every lot is illustrated)

Please pay for postage / For interested clients

from:

Europe

(in cash DM 5.00 or £ 2,00 or US \$ 4.00)

Overseas

Please notice:

We don't accept credit cards!

If you send bank checks please add

\$10.00

for banking charges!

Thank you very much

We are the top specialists
around the world in Olympics

Heiko Volk

Olympia-Philatelie

Postfach 3447 - Friedrich-Ebert-Str.85

D-64715 Michelstadt - Germany

Tel. ++ 6061-4899 - FAX ++ 6061-73631

Internet: <http://www.olympiaphilatelie-volk.inl.de>

e-mail: Heiko.Volk@t-online.de

